



SHEET METAL PROCESSING



Press brakes

Top performance at the best value for money

Bending

KNUTH machines give your ideas the right shape

Cutting

KNUTH guillotine shears - motor, hydraulic and CNC control

Services

Our qualified service team will gladly assist you with an installation and training for your new machine!
We put your machine into operation and instruct your employees - worldwide!

Assembly and Start-up Services

Start-up Package

- ✓ **Initial Setup**
Removing transportation locks, assembly of machine components, levelling of the machine tool
- ✓ **Machine Tool Commissioning**
Filling up operating fluids, conducting machine test run
- ✓ **Operator Training**
Training on all machine functions and maintenance

Add-ons

- ✓ **CNC Operator Training**
- ✓ **KNUTH-Protect - Machine Insurance**
- ✓ **First maintenance service**



Maintenance Services

With our preventive maintenance packages, we make sure your machine remains a reliable cornerstone of your production. In addition to the necessary service jobs according to the KNUTH maintenance schedule for the specific machine, our service technician will also provide you with a detailed service protocol containing a condition rating of your machine tool, results of the accuracy tests, and a proposal for further maintenance and repair jobs.

Conventional Machines

- ✓ **Testing of machine function**
- ✓ **Testing of safety features**
- ✓ **Geometric accuracy testing**
- ✓ **Checking all maintenance and wear points**
- ✓ **Service protocol**

CNC Machines

- ✓ **Testing of machine function**
- ✓ **Testing of safety features**
- ✓ **Geometric accuracy testing**
- ✓ **Checking all maintenance and wear points**
- ✓ **Control and software check-up**
- ✓ **Service protocol**

Cutting Machines

- Testing of machine function**
- Testing of safety features**
- Geometric accuracy testing**
- Checking all maintenance and wear points**
- Control and software check-up**
- Pump / laser source / plasma source check-up**
- Service protocol**

Spare Parts

In case of unforeseen emergency situations, you will always have a KNUTH Machine Service available. Our Spare Parts Department at our headquarters in Wasbek keeps more than 10.000 parts in stock at all times.

The KNUTH Service Help Desk is at your side with advice and solutions. They offer technical support by phone or upon agreement in person at your site. Just give us a call or send us an e-mail.

KNUTH Technical Service Help Desk

Tel. +49 4321 609-263 / -273
E-Mail service@knuth.de

KNUTH Spare Parts Service

Tel. +49 4321 609-258 / -265
E-Mail ersatzteile@knuth.de



Sheet Metal Processing

Press Brakes

AHK V CNC Series	2 / 3
AHK M NC Series	4 / 5

Hydraulic Presses

HPK A Series	22 / 23
KP A Series	24 / 25

Swing-Beam Shears

KHT V CNC Series	6 / 7
KHT M NC Series	8 / 9
KMT RNC Series	10 / 11
KMT M Series	12 / 13
KMT B Series	14 / 15

Workshop Presses

KNWP M Series	26 / 27
KNWP H Series	28 / 29
1-5 T Series	30

Folding Machines

SBS E Series	16
SBS 1020 • 1270	17

Tube Benders	31
--------------	----

Roll Bending Machines

KRM T Series	18 / 19
KRM AT Series	20 / 21

Accessories	32
-------------	----

Press Brakes AHK V CNC Series

NEW



The compact DA-53T is a highly advanced touchscreen control solution for synchronized press brakes. The Delem touchscreen graphic user interface makes programming very easy.



CNC-controlled die bending machine for series production with extensive standard equipment and great customization potential

- Superior machining quality
- Premium hydraulic and electronic components
- Modern DELEM graphical touchscreen equipment
- Laser optical safety system at the tool
- Time-saving detailing solutions



The rigid front support arms feature a ratchet mechanism for quick height adjustments

STANDARD EQUIPMENT

- ✓ Delem 53 T 2D touch control
- ✓ X-axis backgauge with linear guide and recirculating ball screw
- ✓ Motorised crowning (optional for AHK V 13040 CNC)
- ✓ Quick clamping upper tool
- ✓ AKAS laser-optical safety system
- ✓ Light barrier
- ✓ European tool clamping system
- ✓ EUROPEAN TYPE upper tool (835 mm segmented)
- ✓ EUROPEAN TYPE Bottom tool 4V H: 60x60 mm
- ✓ Foot pedal with emergency stop switch
- ✓ 2 front support arms / movable
- ✓ 2 height-adjustable backgauge fingers
- ✓ ECO mode energy-saving function
- ✓ Operator instructions

OPTIONAL EQUIPMENT

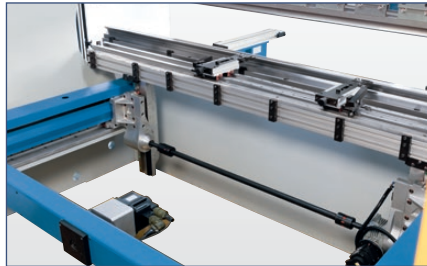
- Back gauge system for X- and R-axis 254223
- Extension rear stop X axle 254226
- Additional back gauge finger (piece) 254227
- Additional support arm (piece) 254228
- Air conditioning for electrical switch cabinet 254229
- Add-on Delem DA58 2D TX (4 axes) for towbar V 254230
- Surcharge Delem DA66T 3D (7 axes) for AHK V 254231
- Add-on Delem DA69T 3D (7 axes) for AHK V 254232
- Knuth PressMax DRM EcoPower for 320 tonnes 254222
- X+R+Z1+Z2 axis backgauge 254225
- Upgrade upper tool from H=67.6 mm to h=105 mm for 4,100 mm 254236



European tool mount



Motorized crowning included in standard equipment (optional for AHK V 13040 CNC)



Option: Back gauge with controlled R axis

SPECIFICATIONS

Machine model numbers		13040	20060	26100	30135	30175	30220	30320	30400	37220	40320
Working area											
Pressure force	t	40	60	100	135	175	220	320	400	220	320
Brake length	mm	1.300	2.100	2.600	3.100	3.100	3.100	3.100	3.100	3.700	4.100
Distance between columns	mm	1.100	1.600	2.200	2.600	2.600	2.600	2.600	2.500	3.100	3.600
Throat depth	mm	310	310	410	410	410	410	410	510	410	410
Stroke	mm	210	210	265	265	265	265	265	310	265	265
Clear opening	mm	425	425	480	480	480	480	480	525	480	480
Table width	mm	110	110	110	110	110	110	110	154	110	154
Table height	mm	850	900	900	900	900	900	920	1.000	900	970
Travels											
Travel in X-axis	mm	750	750	750	750	750	750	750	750	750	750
Feed											
Bending speed	mm/s	10	10	10	10	9	9	8	8	9	9
Rapid feed	mm/s	180	190	180	160	160	150	140	120	150	150
Return speed	mm/s	120	120	130	130	120	140	130	130	140	130
Feed speed X-axis	mm/s	600	600	600	600	600	600	600	600	600	600
Drive capacity											
Motor rating main drive	kW	5,5	7,5	11	15	18,5	22	30	37	22	30
Measures and weights											
Hydraulic tank volume	l	120	140	230	230	230	350	350	350	230	350
Overall dimensions (l x w x h)	m	2,3x2,5 x2,45	3,1x2,5 x2,52	3,55x2,5 x2,68	4,05x2,55 x2,75	4,1x2,55 x2,82	4,1x2,6 x2,85	4,1x2,75 x3	4,3x2,95 x3,2	5x2,7 x2,85	5,3x2,9 x3
Weight	kg	4.000	5.400	7.200	9.000	10.500	12.000	15.600	20.000	14.000	18.500
Part No.		182648	182649	182650	182651	182652	182653	182654	182655	182656	182657

Press Brakes

AHK M NC Series



Intuitive control with large touchscreen and three operating modes:
Manual / Semi-Automatic / Automatic



INFO



VIDEO

Compact NC bending solution with X and R axis and extensive standard equipment as an excellent alternative to CNC machines

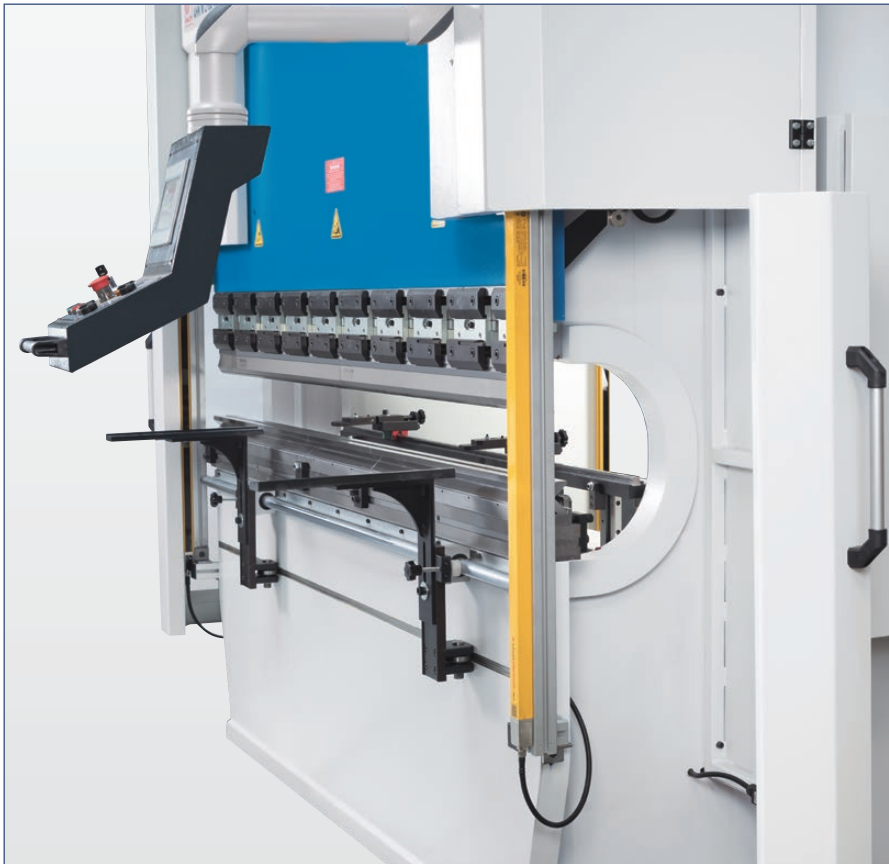
- Stress-relieved welded steel construction
- Top beam with torsion shaft
- NC control with touch-screen HMI
- Back gauge with X and R axes
- European-style male die

STANDARD EQUIPMENT

- ✓ Weintek 7" NC-control
- ✓ Motorized backgauge X-axis
- ✓ Motorized backgauge R-axis
- ✓ European type bottom tool 4V
- ✓ Upper tool H European style H = 67 mm (segmented)
- ✓ Laser optical safety system
- ✓ Light curtain
- ✓ Sliding front support arms (2 pcs)
- ✓ Foot pedal with emergency stop switch
- ✓ Operator instructions

OPTIONAL EQUIPMENT

- Motorized crwoning 253726
- Extended backgauge for X-axis (1540 NC / 2160 NC) 253659
- Additional backgauge finger (pc) 253660



A large throat and narrow table ensure plenty of free space to accommodate complex bending



Clear structure: Clearly structured layout of components simplifies maintenance and troubleshooting



The hydraulic unit is located on top of the machine, providing additional room for bending

SPECIFICATIONS				
Machine model numbers		1230 NC	1540 NC	2160 NC
Working area				
Pressure force	t	30	40	60
Brake length	mm	1.250	1.550	2.100
Distance between columns	mm	1.010	1.260	1.700
Throat	mm	255	320	320
Stroke	mm	150	160	160
Clear opening	mm	265	380	380
Table width	mm	130	100	100
Travels				
Travel in X-axis	mm	500	600	600
Travel in R-axis	mm	140	140	140
Feed				
Bending speed	mm/s	10	10	10
Rapid feed	mm/s	120	80	75
Return speed	mm/s	70	60	55
Drive capacity				
Motor rating main drive	kW	3	5,5	7,5
Motor rating X-axis	kW	0,55	0,75	0,75
Motor rating R-axis	kW	0,25	0,25	0,25
Measures and weights				
Hydraulic tank volume	l	90	120	120
Overall dimensions (L x w x h)	m	1,76x1,38x2,14	2x1,6x2,23	2,45x1,6x2,23
Weight	kg	1.700	3.450	4.340
Part No.		182640	182641	182642

Swing-Beam Shears KHT V CNC Series

NEW



CybTouch 8 G is a powerful control that perfectly complements premium plate shears

Guided guillotine shear with high cutting performance, adjustable cutting angle and proven Cybelec CNC control system

- Cybelec Touch 8 control
- Controlled back gauge with preloaded ball screw
- Controlled kerf adjustment
- Controlled cutting angle adjustment
- Knife suitable for stainless steel

STANDARD EQUIPMENT

- ✓ Cybelec Touch 8 G controller
- ✓ Energy saving function ECO mode
- ✓ CNC controlled blade gap adjustment
- ✓ Motorized back-gauge
- ✓ Shadow graph display of cut line
- ✓ Material support table with rollers
- ✓ Support arms
- ✓ Lateral stop
- ✓ Foot switch with emergency stop switch
- ✓ Finger guard
- ✓ Safety system for work area back gauging
- ✓ Standard upper and lower knife for stainless steel sheets
- ✓ Operator instructions

OPTIONAL EQUIPMENT

- Support arm L = 1,500 mm 254206
- Support arm L = 2,000 mm 254209
- Squaring arm, L = 1,500 mm 254207
- Squaring arm, L = 2,000 mm 254210
- Adjustable angle stop 0 - 180 ° 254208
- Automatic central lubrication system 254211
- Hydraulic oil cooler 254212
- Sheet hold-up device (fixed) for 4006 - 4010 254214





Upper and lower cutter for stainless steel plates included



With the optional pneumatically controlled plate hold-up fixture even thin metal sheets can be positioned with high accuracy at the back gauge



The mobile control unit increases both safety and work efficiency



Premium components for guaranteed-lasting reliable operation

SPECIFICATIONS

Machine model numbers		3006 CNC	3010 CNC	3013 CNC	3016 CNC	3020 CNC	4006 CNC	4010 CNC	4013 CNC	4016 CNC	4020 CNC
Working area											
Working length	mm	3.050	3.050	3.050	3.050	3.050	4.100	4.100	4.100	4.100	4.100
Throat	mm	150	150	150	150	150	150	150	150	150	150
Cutting angle	deg	0,5 - 2	0,5 - 2	0,5 - 2	0,5 - 2	0,5 - 2	0,5 - 2	0,5 - 2	0,5 - 2	0,5 - 2	0,5 - 2
Strokes per minute	H/min	12 - 20	10 - 19	9 - 17	7 - 12	5 - 12	10 - 19	8 - 17	7 - 13	5 - 19	4 - 8
Hold-down	positions	13	16	16	16	16	20	20	20	20	20
Back Gauge											
Rear stop	mm	1.000	1.000	1.000	1.000	1.000	1.000	1.000	1.000	1.000	1.000
Feed speed X-axis	mm/min	9.000	9.000	9.000	9.000	9.000	9.000	9.000	9.000	9.000	9.000
Front Support Arms											
Number of support arms	positions	2	2	2	2	2	3	3	3	3	3
Length of support arms	mm	1.000	1.000	1.000	1.000	1.000	1.000	1.000	1.000	1.000	1.000
Cutting Capacities											
Plate thickness (max.) - 450 N/mm ²	mm	6	10	13	16	20	6	10	13	16	20
Plate thickness(max.) - 700 N/mm ²	mm	4	6	8	10	13	4	6	8	10	13
Drive capacity											
Motor rating main drive	kW	11	22	30	37	45	11	22	30	37	45
Hydraulic tank volume	l	140	200	250	315	400	140	200	350	400	500
Measures and weights											
Overall dimensions (l x w x h)	m	4,1x3,65 x1,9	4,15x3,6 x2,1	4,15x3,6 x2,45	4,15x3,8 x2,5	4,15x3,8 x2,7	5,15x3,6 x2,2	5,25x3,6 x2,35	5,35x3,7 x2,53	5,55x3,7 x2,7	5,7x3,8 x2,85
Weight	kg	7.800	9.600	11.500	18.500	21.000	11.200	15.000	17.000	22.000	28.000
Part No.		183300	183301	183302	183303	183304	183305	183306	183307	183308	183309

Swing-Beam Shears

KHT M NC Series



NC control for quick positioning of the back gauge

Rigid swing beam construction with plate hold-up feature and NC control for the back gauge

- Estun E21 NC control
- Back gauge with preloaded ball screws gauge
- Pneumatic plate hold-up feature
- Cutter also suitable for stainless steel
- Adjustable angular stop

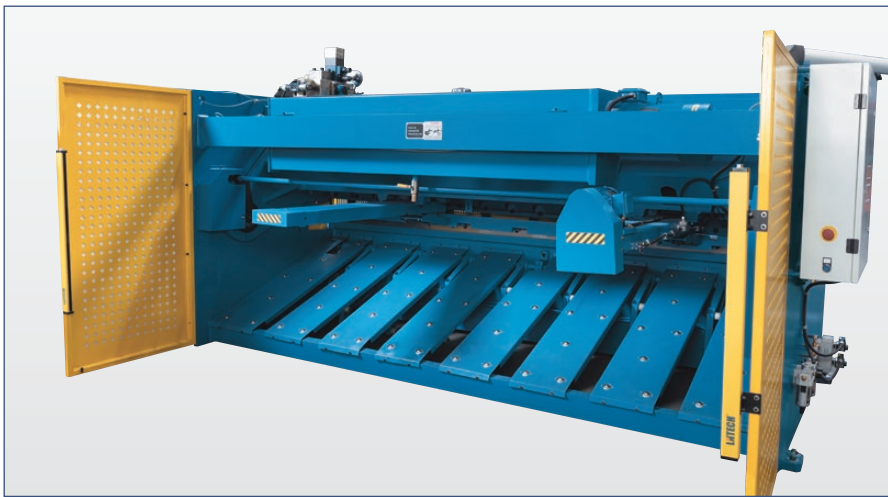
STANDARD EQUIPMENT

- ✓ NC control Estun E21S
- ✓ Pneumatic sheet support
- ✓ Controlled backgauge
- ✓ Shadow light cutting line
- ✓ Front support arms
- ✓ Foot pedal with emergency stop switch
- ✓ Manual cutting gap adjustment
- ✓ Full length finger guard
- ✓ Safety system for back working area
- ✓ Standard upper and lower knife for stainless steel sheets
- ✓ Adjustable angle stop
- ✓ Operating tools
- ✓ Operator instructions

OPTIONAL EQUIPMENT

- Hydraulic oil cooler 253964
- Additional blade set 253972
- Automatic central lubrication 253975





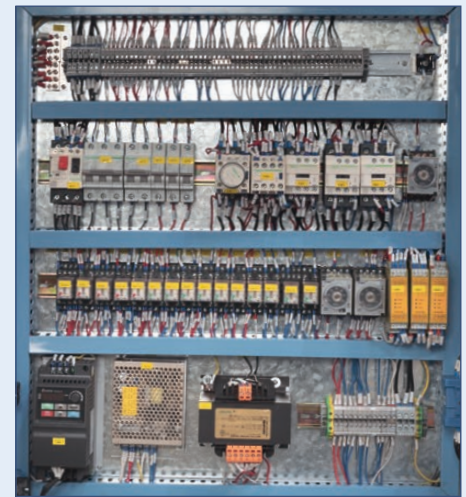
With the pneumatically controlled plate hold-up fixture even thin metal sheets can be positioned with high accuracy at the back gauge



User-friendly NC-controlled back gauge for precise single cuts or series production



Central kerf adjustment



High-quality electric components for maximum reliability



Easy to use to use angle stop with clamping lever and angle scale

SPECIFICATIONS

Machine model numbers		2006 NC	2506 NC	3006 NC	3008 NC	3010 NC	3012 NC	4006 NC	4008 NC	4010 NC	4012 NC
Working area											
Working length	mm	2.000	2.500	3.200	3.200	3.200	3.200	4.000	4.000	4.000	4.000
Throat	mm	150	150	150	150	150	150	150	150	150	150
Cutting angle	deg	1,5	1,5	1,5	1,5	1,5	1,5	1,5	1,5	1,5	1,5
Strokes per minute	H/min	20	18	14	10	8	14	14	8	8	10
Hold-down	positions	9	10	13	13	13	12	16	15	15	14
Back Gauge											
Rear stop	mm	1.000	1.000	1.000	1.000	1.000	1.000	1.000	1.000	1.000	1.000
Feed speed X-axis	mm/min	2.280	2.280	2.280	2.280	2.280	2.280	2.280	2.280	2.280	2.280
Front Support Arms											
Number of support arms	positions	3	3	3	3	3	3	4	4	4	4
Length of support arms	mm	1.000	1.000	1.000	1.000	1.000	1.000	1.000	1.000	1.000	1.000
Cutting Capacities											
Plate thickness (max.) - 450 N/mm ²	mm	6	6	6	8	10	12	6	8	10	12
Plate thickness(max.) - 700 N/mm ²	mm	4	4	4	5	6	8	4	5	6	8
Drive capacity											
Motor rating main drive	kW	7,5	7,5	7,5	11	15	18,5	7,5	11	15	18,5
Hydraulic tank volume	l	200	250	250	250	250	400	250	300	300	400
Measures and weights											
Overall dimensions (l x w x h)	m	2,58x1,53 x1,6	3,13x1,53 x1,6	3,84x1,68 x1,62	3,85x1,85 x1,76	3,85x1,85 x1,76	3,93x1,8 x1,94	4,63x1,85 x1,7	4,65x1,9 x1,76	4,65x1,9 x1,76	4,73x2 x2,04
Weight	kg	4.500	5.000	6.700	8.300	8.500	10.800	8.600	9.700	10.000	13.200
Part No.		184218	184219	184210	184212	184214	184216	184211	184213	184215	184217

Swing-Beam Shears KMT RNC Series

NEW



Sliding block guided motorized plate shears with NC-controlled back gauge

- Solid steel weldment with sliding block guide
- NC-controlled back gauge can be easily programmed
- Automatic, semi-automatic, and manual modes
- Cutter for stainless steel machining included
- Reversible cutters with multiple cutting surfaces
- Adjustable kerf
- Return-to-Sender function



Lateral stop with scale and manually adjustable kerf setting



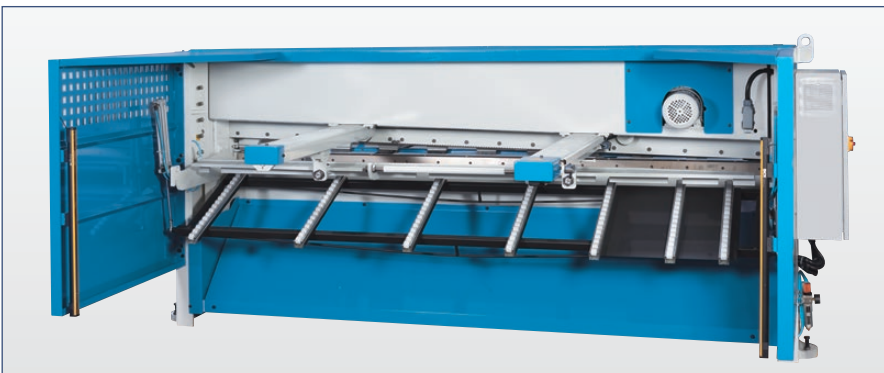
INFO

STANDARD EQUIPMENT

- ✓ BRL NC controller
- ✓ Cutting unit counter
- ✓ Cutting line lightning & shadow illumination
- ✓ Finger protection cages
- ✓ Rear safety covers with photocell
- ✓ Bottomblade with 2 cutting sides + upper blade with 4 cutting sides
- ✓ Foot switch with emergency stop switch
- ✓ Squaring arm with T slot
- ✓ Front sheet holding arms
- ✓ Motorized rear stop (750 mm)
- ✓ Manual cutting gap adjustment
- ✓ Manual return to sender
- ✓ Table with ball transfer
- ✓ Operator instructions

OPTIONAL EQUIPMENT

- Additional blade set for 3.000 mm cutting length 254191
- 0-180° Angular Shearing Device 254196
- Upgrade from 750 to 1000 mm NC controlled backgauge 254197
- Squaring arm extension to 2.000 mm 254198
- Front arm 2.000 mm per piece 254201
- Pneum. Sheet holding device with reset function 254203
- Upgrade to Fuji controller 254204



The Return-to-Sender function guides short material sections back to the front of the machine. The custom design of the optional pneumatic plate hold-up fixture lets the operator select to transport the cut material either to the front or to the rear of t



The standard control allows for quick, automatic back gauge adjustment

SPECIFICATIONS

Machine model numbers		1505	2004	2504	3004
Working area					
Working length	mm	1.560	2.060	2.560	3.060
Cutting angle	deg	2	1,3	1,3	1,3
Work table height	mm	880	880	880	880
Work table depth	mm	455	455	455	455
Number of support arms	positions	1	2	2	3
Support arms	mm	1.000	1.000	1.000	1.000
Strokes per minute	H/min	31	31	31	31
Back Gauge					
Rear stop	mm	750	750	750	750
Cutting Capacities					
Plate thickness (min.) - 450 N/mm ²	mm	0,2	0,2	0,2	0,2
Plate thickness (max.) - 450 N/mm ²	mm	5	4	4	4
Plate thickness (max.) - 700 N/mm ²	mm	2,5	2	2	2
Drive capacity					
Motor rating main drive	kW	7,5	7,5	7,5	11
Measures and weights					
Overall dimensions (l x w x h)	m	2,25x2,35x1,4	2,7x2,35x1,4	3,2x2,35x1,4	3,7x2,35x1,4
Weight	kg	2.600	3.100	3.500	4.100
Part No.		133625	133626	133627	133628

Swing-Beam Shears KMT M Series

NEW



Sliding-block guided motorized plate shears with manually adjustable controlled back gauge

- Solid steel weldment with sliding block guide
- Cutters for stainless steel cutting are included
- Reversible cutters with multiple cutting surfaces
- Manual back gauge with travel display
- Work area secured by light curtain

STANDARD EQUIPMENT

- ✓ 750 mm manual controlled backgauge
- ✓ Cutting unit counter
- ✓ Cutting line lightning & shadow illumination
- ✓ Finger protection cages
- ✓ Rear safety covers with photocell,
- ✓ Bottomblade with 2 cutting sides + upper blade with 4 cutting sides
- ✓ Foot switch with emergency stop switch
- ✓ Squaring arm with T slot, stoper + ruler
- ✓ Front sheet holding arms
- ✓ Operator instructions

OPTIONAL EQUIPMENT

- Return to rear pneumatic sheet support system 254188
- Backgauge NC control (750 mm BRL) 254189
- Backgauge NC control (1.000 mm BRL) 254190
- Additional blade set for 2.000 mm cutting length 254193
- 0-180° Angular Shearing Device 254196
- Upgrade to Fuji controller 254204



INFO



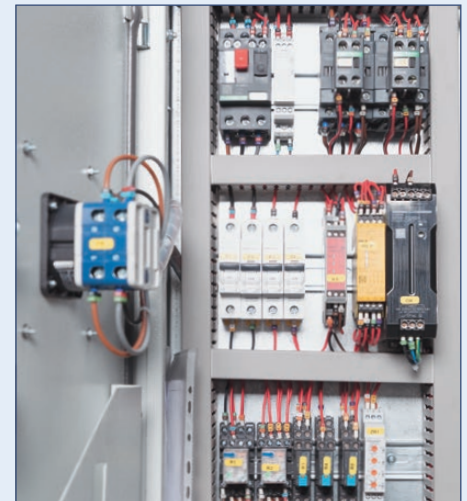
Back gauge is protected via sturdy enclosure and light curtain



Robust lateral stop with scale



Manual back gauge with long travel



Clearly structured layout of components simplifies maintenance and troubleshooting

SPECIFICATIONS

Machine model numbers		1303	1503	2003
Working area				
Working length	mm	1.360	1.560	2.060
Cutting angle	deg	2	2	1,3
Work table height	mm	810	810	810
Work table depth	mm	390	390	390
Number of support arms	positions	2	2	2
Support arms	mm	450	450	450
Strokes per minute	H/min	35	35	35
Back Gauge				
Rear stop	mm	750	750	750
Cutting Capacities				
Plate thickness (min.) - 450 N/mm ²	mm	0,25	0,25	0,25
Plate thickness (max.) - 450 N/mm ²	mm	3	3	3
Plate thickness(max.) - 700 N/mm ²	mm	1,5	1,5	1,5
Drive capacity				
Motor rating main drive	kW	3	3	4
Measures and weights				
Overall dimensions (L x w x h)	m	1,92x2,1x1,26	2,1x2,1x1,26	2,65x2,1x1,26
Weight	kg	1.250	1.500	1.750
Part No.		133620	133621	133622

Swing-Beam Shears

KMT B Series



Simple, robust motorised guillotine shears with manual backgauge

- Solid steel weldment
- Rugged long support arms
- Mobile control unit with foot switch
- Manual back gauge with counter (back-of-machine operation)

STANDARD EQUIPMENT

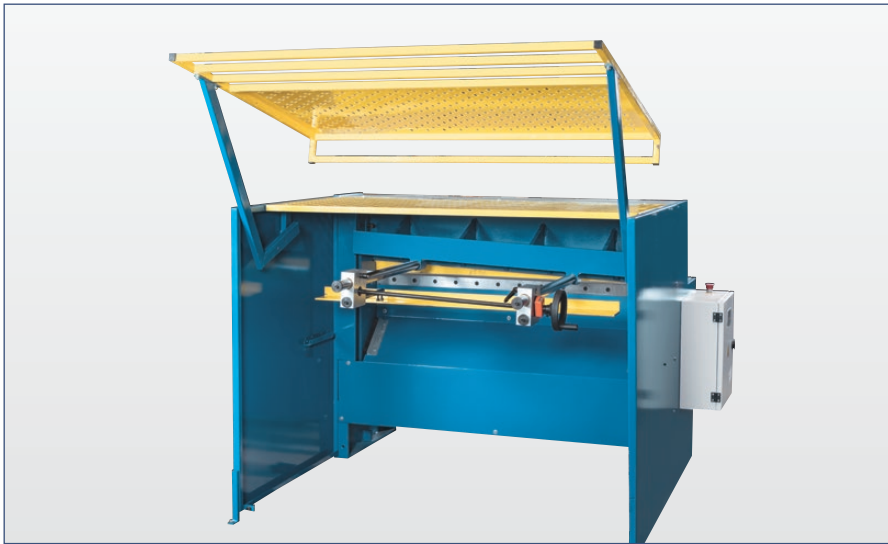
- | | |
|---|-------------------------|
| ✓ Foot pedal with emergency stop switch | ✓ Cut-line lighting |
| ✓ Side angle stop | ✓ Manual rear stop |
| ✓ Support arms | ✓ Operator instructions |
| ✓ Automatic hold-down device | |



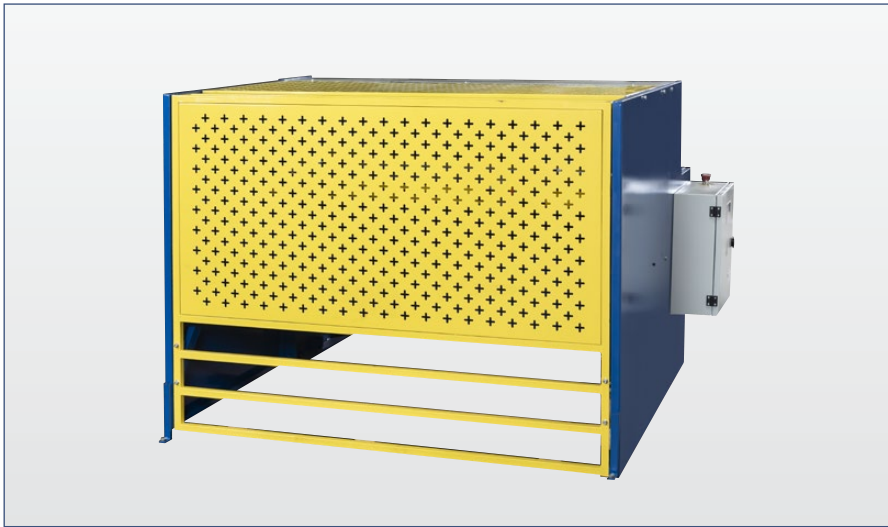
Illuminated cut line ensures good visibility of marking



The back gauge is robust and rigid



The motorized back gauge is robust and rigid and can handle any challenges in everyday operations



Swivel-mounted workspace enclosure ensures operator safety



Manual back gauge with counter

SPECIFICATIONS					
Machine model numbers		1253	1254	2052	2053
Working area					
Working length	mm	1.250	1.250	2.050	2.050
Cutting angle	deg	2	2,4	2	2
Strokes per minute (automatic mode)	H/min	30	27	30	27
Knife length	mm	1.350	1.350	2.100	2.100
Work table height	mm	830	830	830	830
Support arms	mm	600	600	600	600
Number of support arms	positions	2	2	3	3
Back Gauge					
Rear stop	mm	630	630	630	630
Cutting Capacities					
Plate thickness (max.) - 450 N/mm ²	mm	0,8 - 3	0,8 - 4	0,8 - 2	0,8 - 3
Drive capacity					
Motor rating main drive	kW	3	4	3	4
Measures and weights					
Overall dimensions (l x w x h)	m	1,69x1,48x1,1	1,72x1,6x1,19	2,5x1,67x1,1	2,5x1,6x1,19
Weight	kg	850	1.185	1.300	1.520
Part No.		133640	133642	133643	133641

Folding Machines

SBS E Series



Exact bending angle across the entire work length

Heavy manual folding machine with segmented upper tool and manual crowning for large working length requirements

- Large bending lengths
- Segmented upper tool for increased bending possibilities
- Built-in manual bending compensation
- Adjustable angle stop
- Easy to use

STANDARD EQUIPMENT

- ✓ Segmented sharp nose tool type upper die
- ✓ Operator manual

OPTIONAL EQUIPMENT

- Manual back gauge SBS E 2020/2,0 257386
- Manual back gauge SBS E 2540/1,5 257387

SPECIFICATIONS

Machine model numbers		2020/2,0	2540/1,5
Working area			
Working length	mm	2.020	2.540
Plate thickness (max.) - 400 N/mm ²	mm	2	1,5
Working height	mm	920	920
Male Die			
Stroke	mm	120	120
Bending Die			
Bending angle (max.)	deg	135	135
Adjustment range for A axis	mm	15	15
Measures and weights			
Overall dimensions (l x w x h)	m	2,8x0,85x1,3	3,32x0,72x1,5
Weight	kg	1.025	1.250
Part No.		131367	131371



Folding Machines

SBS 1020 • 1270



Compact manual swivel bending machine with segmented upper tool

- Compact and torsion-proof
- Segmented male die for many bending possibilities
- Built-in, manual bending compensation
- Adjustable angle stop for batch production
- Foot switch for top tool clamping for hands-free use

STANDARD EQUIPMENT

- ✓ Segmented sharp nose tool type upper die
- ✓ Operator manual

SPECIFICATIONS

Machine model numbers		1020/2,5	1270/2
Working area			
Working length	mm	1.020	1.270
Plate thickness (max.) - 400 N/mm ²	mm	2,5	2
Bending bar angle (range)		135°	135°
Measures and weights			
Overall dimensions (l x w x h)	m	1,35x0,85x1,18	1,6x0,9x1,18
Weight	kg	285	330
Part No.		131364	131363



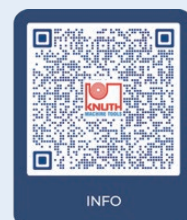
Compact dimensions and high bending power



The segmented male die allows machining of box profiles with various side lengths



An angular stop ensures that every workpiece is bent with the same settings



3-Roller Roll Bender **KRM T Series**



Motor-driven rollers in asymmetrical arrangement with manual back roller adjustment for machining thin and medium plates

- Asymmetrical structure
- Main motor with braking
- Hardened rollers with wire insertion grooves
- Conical bender
- Manual rear roller adjustment (optionally motor-driven)

STANDARD EQUIPMENT

- ✓ Conical bending feature
- ✓ Hardened rollers
- ✓ Wire insert groove
- ✓ Emergency stop safety rope
- ✓ Separate control panel with foot switch
- ✓ Side cover
- ✓ Operator instructions

OPTIONAL EQUIPMENT

- Digital display for rear roller adjustment 253981
- Motorized backroll adjustment 254138



INFO



VIDEO



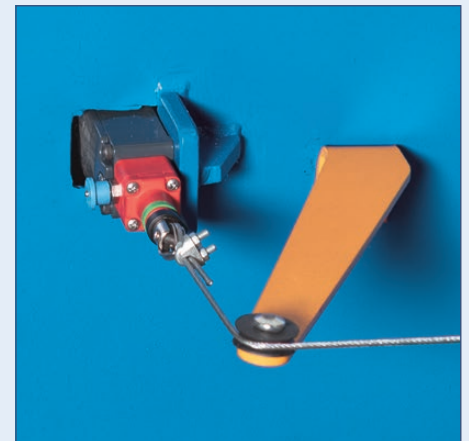
The rear roller can be equipped with an optional motorized feed and digital display



The upper roller swivels outward for easy removal of finished workpieces



The heavy-duty roll bender series is designed for workpieces with lengths up to 2000 mm



The safety switch features a circumferential lanyard and is a significant safety feature ensuring a quick and reliable machine stop in an emergency

SPECIFICATIONS

Machine model numbers		10/4,0	10/5,0	12/5,0	15/3,0	15/4,0	20/2,0	20/4,0
Working area								
Working length	mm	1.050	1.050	1.270	1.550	1.550	2.050	2.050
Plate thickness (max.) - 450 N/mm ²	mm	4	5	5	3	4	2	4
Plate thickness(max.) - 700 N/mm ²	mm	2	2,5	2,5	1,5	2	1	2
Max. plate thickness for conical bending	mm	3	3	3	2	3	1,5	2,5
Roll diameter	mm	110	130	140	110	140	110	140
Roller speed	m/min	3	3,5	3,5	3	3,5	3	3,5
Wire grooves diameter	mm	4/7/9/13	4/7/9/13	4/7/9/13	4/7/9/13	4/7/9/13	4/7/9/13	4/7/9/13
Drive capacity								
Motor rating main drive	kW	2,2	2,2	2,2	2,2	2,2	2,2	2,2
Measures and weights								
Overall dimensions (l x w x h)	m	2,2x0,75 x1	2,2x0,75 x1	2,47x0,75 x1	2,7x0,75 x1	2,7x0,75 x1	3,2x0,75 x1	3,2x0,75 x1
Weight	kg	990	1.200	1.350	1.200	1.420	1.380	1.650
Part No.		131980	131981	131983	131984	131985	131986	131988

Roll Bending Machines

KRM AT Series



The rear roller is fed manually or as an option motor-driven

Motor-driven rollers in asymmetrical arrangement with manual back roller adjustment for machining fine and thin plates

- Asymmetrical structure
- Main motor with brakes
- Hardened rollers with wire insertion grooves
- Conical bender

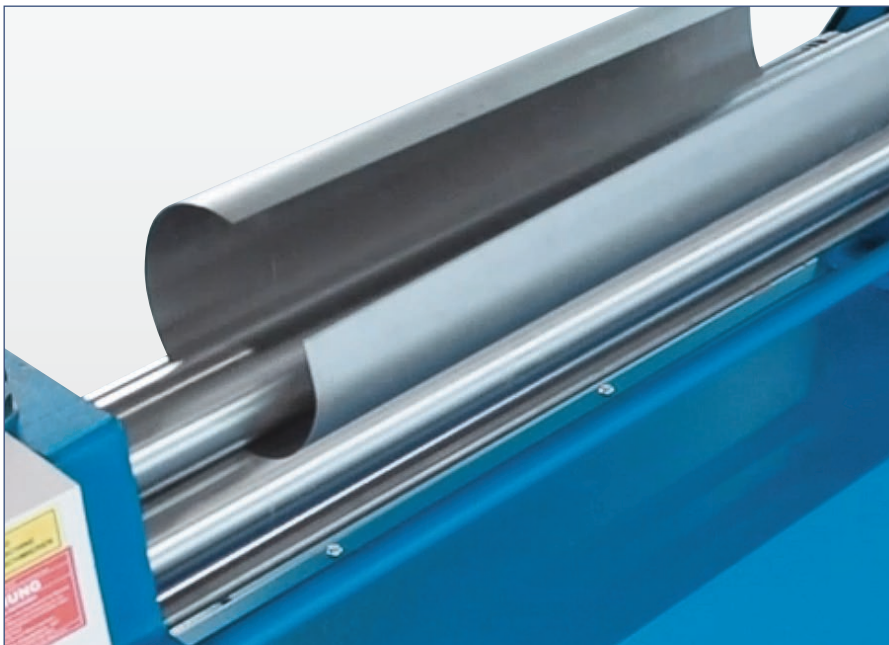
STANDARD EQUIPMENT

- ✓ Conical bending feature
- ✓ Hardened rollers
- ✓ Wire insert groove
- ✓ Emergency stop safety rope
- ✓ Separate control panel with foot switch
- ✓ Side cover
- ✓ Operator instructions

OPTIONAL EQUIPMENT

- Digital readout for backroll 253979
- Motorized back roll adjustment backroll for KRM AT 253980

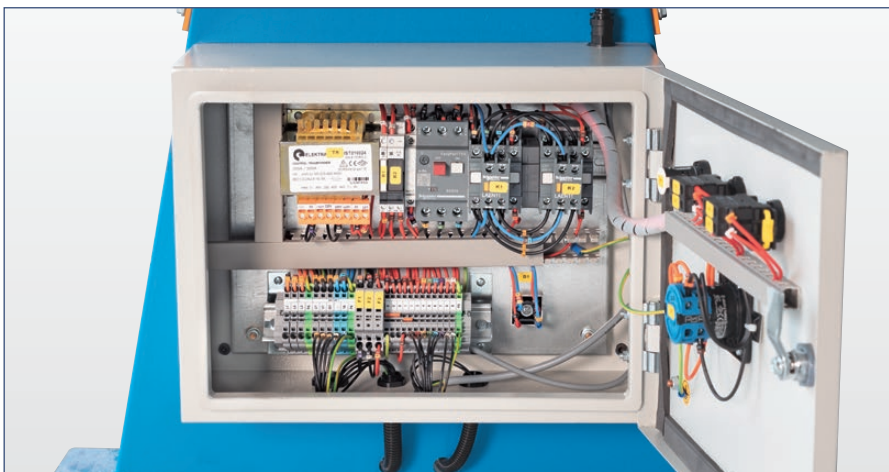




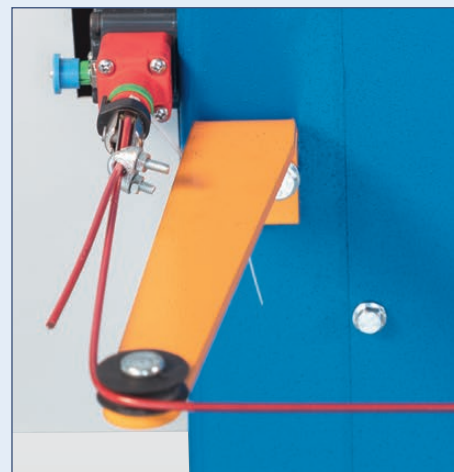
Hardened bending rollers can be used for machining stainless steel plates



The upper roller swivels outward for easy removal of tube-shaped bent workpieces



The compact control cabinet is equipped with high-quality



The safety switch features a circumferential lanyard and is a significant safety feature ensuring a quick and reliable machine stop in an emergency

SPECIFICATIONS

Machine model numbers		10/3,0	12/2,5	15/2,0
Working area				
Working length	mm	1.050	1.270	1.550
Plate thickness (max.) - 450 N/mm ²	mm	3	2,5	2
Plate thickness(max.) - 700 N/mm ²	mm	1,5	1,5	1,8
Max. plate thickness for conical bending	mm	2	2	1,8
Roll diameter	mm	90	90	90
Roller speed	m/min	6	6	6
Wire grooves diameter	mm	4/6/9	4/6/9	4/6/9
Drive capacity				
Motor rating main drive	kW	1,1	1,1	1,5
Measures and weights				
Overall dimensions (L x w x h)	m	1,63x0,7x1,2	1,85x0,7x1,2	2,13x0,7x1,2
Weight	kg	480	520	580
Part No.		131970	131971	131972

Hydraulic Presses

HPK A Series



C-form press in compact design, the perfect solution for punching, forming and drawing

- Classic design with c-frame
- Completely built in Europe for high reliability
- Designed for testing or batch production
- Possibility of Industry 4.0 integration
- Customized solution available



INFO

STANDARD EQUIPMENT

- ✓ Two-hand control panel
- ✓ Adjustable stops for up/downstroke
- ✓ Pressure gauge
- ✓ Movable upper table with 2 guides and T-slots
- ✓ Automatic operation
- ✓ Automatic cylinder return
- ✓ Siemens PLC
- ✓ Hydraulic unit with 2 speed automatic change
- ✓ Pressure switch
- ✓ Timer
- ✓ Operator manual

OPTIONAL EQUIPMENT

- Upgrade from 2 to 4 lateral slides for HPK / KP 40-100 t 253857
- Light curtain L = 1,000 mm 253855
- Upgrade to Siemens KTP 700 Basic digital control 253856
- Upgrade from 2 to 4 lateral slides for HPK / KP 150-200 t 253858
- Pieces counter 253860
- Air/oil heat exchanger with decompression valve 253861
- Decompression valve 253862



Diagonally aligned slots for easy centered tool clamping



Two circular guides ensure maximum ram plate parallelism during stroke movement



Space saving hydraulic system located accessibly inside the frame

SPECIFICATIONS

Machine model numbers		40 A	70 A	100 A	150 A	200 A
Working area						
Pressure force	t	40	70	100	150	200
Table dimensions	mm	700x500	700x500	800x600	900x600	1.000x600
Stroke	mm	500	500	500	500	500
Ram-plate size	mm	700x350	700x350	700x350	800x400	870x500
Throat	mm	250	250	300	300	300
Stroke speed	mm/s	9	5	4	3	3
Rapid feed						
Rapid feed	mm/s	26	24	25	20	21
Drive capacity						
Motor rating	kW	4	4	4	4	7,5
Measures and weights						
Overall dimensions (L x w x h)	m	1,5x1x2,5	1,5x1x2,5	1,9x1,2x2,6	2,2x1,5x3	2,3x1,5x3
Weight	kg	1.500	2.100	3.400	5.500	8.200
Part No.		131507	131508	131509	131510	131511

Hydraulic Presses

KP A Series



Compact double-column press for punching, forming and drawing with large tools

- Made in Europe
- For test and series production
- Multi-shift operation possible
- Industry 4.0 integration possible
- Customised solutions on request



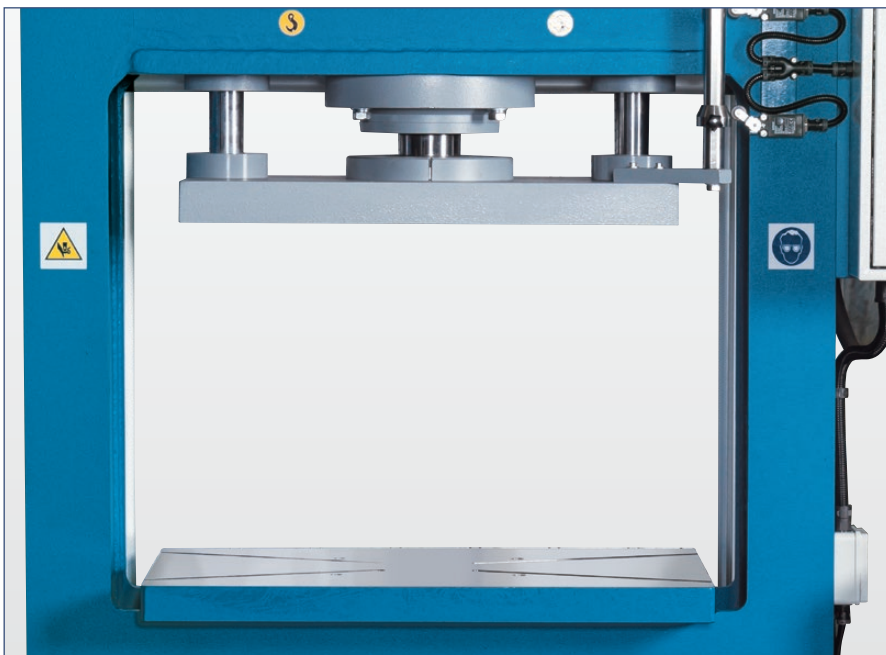
INFO

STANDARD EQUIPMENT

- ✓ Two-hand control panel
- ✓ Adjustable stops for up/downstroke
- ✓ Pressure gauge
- ✓ Movable upper table with 2 guides and T-slots
- ✓ Automatic operation
- ✓ Automatic cylinder return
- ✓ Siemens PLC
- ✓ Hydraulic unit with 2 speed automatic change
- ✓ Pressure switch
- ✓ Timer
- ✓ Operator manual

OPTIONAL EQUIPMENT

- Upgrade from 2 to 4 lateral slides for HPK / KP 150-200 t 253858
- Upgrade from 2 to 4 lateral slides for HPK / KP 40-100 t 253857
- Light curtain L = 1,000 mm 253855
- Upgrade to Siemens KTP 700 Basic digital control 253856
- Pieces counter 253860
- Air/oil heat exchanger with decompression valve 253861
- Decompression valve 253862



Shown: large capacity of 900 - 1500 mm



Work example is shown

SPECIFICATIONS

Machine model numbers		70 A	100 A	150 A	200 A	300 A
Working area						
Pressure force	t	70	100	150	200	300
Table dimensions	mm	800x500	900x600	1.200x700	1.200x700	1.400x1.000
Stroke	mm	500	500	500	500	500
Ram-plate size	mm	700x350	700x350	1.000x400	1.000x400	1.100x800
Throat width	mm	900	1.050	1.250	1.250	1.500
Stroke speed	mm/s	5	4	3	2	2
Rapid feed						
Rapid feed	mm/s	24	26	22	20	22
Drive capacity						
Motor rating	kW	4	4	4	5,5	7,5
Measures and weights						
Overall dimensions (l x w x h)	m	1,85x1,04x2,25	2,08x1,05x2,26	2,35x1,5x2,5	2,35x1,6x2,5	2,5x1,65x2,65
Weight	kg	1.450	2.300	4.900	5.800	7.200
Part No.		131501	131502	131503	131504	131505

Workshop Presses

KNWP M Series



KNWP 30 M is shown

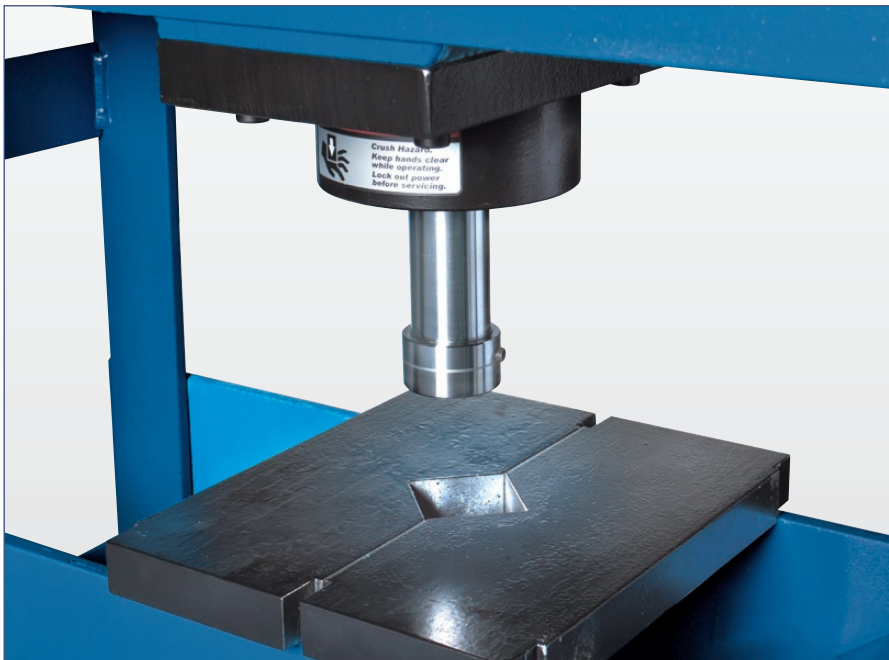


Manual, ideal for craft shops, schools and training facilities

- High quality - Made in Europe
- With hand and foot control
- Adjustable table height
- Material support included



Foot control (KNWP 30 / 50 M) only



V-shaped support set



KNWP 30 M



KNWP 15 M

SPECIFICATIONS				
Machine model numbers		15 M	30 M	50 M
Working area				
Pressure force	t	15	30	50
Operating pressure (max.)	bar	382,2	374,6	399,5
Total piston stroke	mm	160	160	160
Throat width	mm	560	565	750
Measures and weights				
Hydraulic tank volume	l	1,65	1,65	1,65
Weight	kg	117	150	250
Overall dimensions (l x w x h)	m	0,83x0,6x1,93	0,83x0,64x2,05	1,1x0,76x2,12
Part No.		131742	131741	131743

Workshop Presses

KNWP H Series



Hydraulic, with horizontal piston travel and a set of prismatic blocks

- Motorized hydraulic drive
- Horizontal piston travel
- Adjustable table height
- Set of prismatic blocks



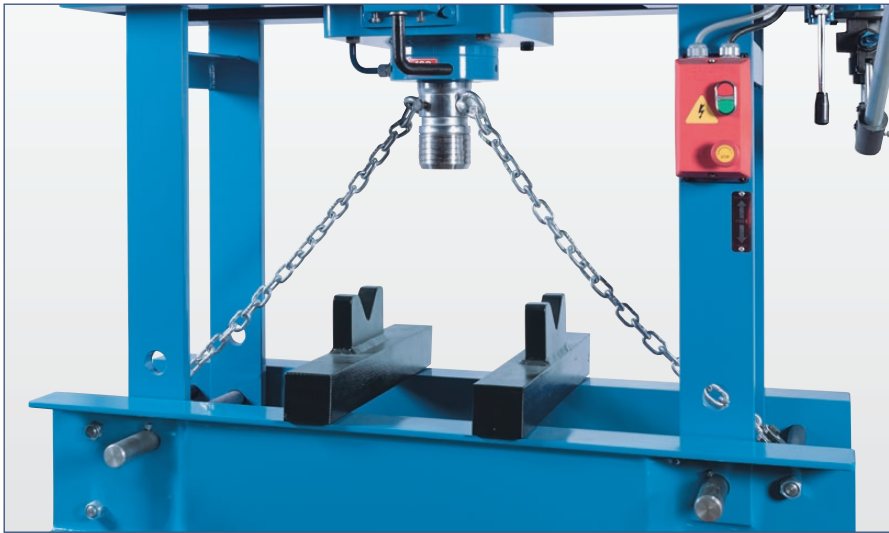
INFO



VIDEO

STANDARD EQUIPMENT

- | | |
|--------------------------------|-------------------|
| ✓ Movable working cylinder | ✓ Manometer |
| ✓ Height adjustable work table | ✓ Operator manual |
| ✓ V-blocks | |



Ergonomic design: The table height easily adjusts via stroke cylinder, reducing physical intervention of operator



Standard v-blocks are very versatile and can be used for a variety of press work tasks



These universal presses are indispensable in technical workshops and maintenance departments



Manual operation allows for precise control of the press force. This is especially important when machining delicate contours, where precisely metered pressure is required

SPECIFICATIONS					
Machine model numbers		H 60	H 100	H 160	H 200
Working area					
Working width	mm	830	1.020	1.100	1.550
Frame through-hole	mm	300	300	350	550
Pressure force	t	60	100	160	200
Operating pressure (max.)	bar	400	400	400	400
Stroke	mm	400	400	400	400
Forward motion speed	mm/s	6,1	7,12	6,2	6,4
Press speed	mm/s	6,1	7,12	6,2	6,4
Return speed	mm/s	10	13,42	9,8	11,04
Drive capacity					
Motor rating hydraulic pump	kW	3	4	5,5	7,5
Measures and weights					
Hydraulic tank volume	l	6	11	15	22
Weight	kg	700	1.000	1.300	2.600
Dimensions (L X W X H)	mm	1.460x850x2.400	1.600x850x2.450	1.640x950x2.550	2.230x1.200x2.850
Part No.		131770	131772	131774	131777

Workshop Presses

1-5 T Series



Arbor press for broaching, punching, and press-fitting



Large throat for removing and press-fitting bearings and bushings



The arbor press can be mounted on a universal machine base or on a workbench

Versatile arbor press with adjustable rod and bench mounting holes

- Compact design
- Heavy one piece casting design
- For a wide range of applications

STANDARD EQUIPMENT

- ✓ Operator manual

OPTIONAL EQUIPMENT

- | | |
|-----------------------------------|--------|
| • Keyway Broach 2x2 / 3x3x130 | 108310 |
| • Keyway Broach 4x4x150 / 8x7x300 | 108315 |
| • Keyway Broach 10 x 8 / 14x9x330 | 108320 |
| • Machine Base Universal | 123952 |

SPECIFICATIONS

Machine model numbers		1 T	2 T	3 T	5 T
Working area					
Press force	kN	5	10	15	20
Throat	mm	100	145	155	220
Workpiece thickness (max.)	mm	147	215	282	400
Ram dimensions	mm	25x25x266	31x31x336	35x35x450	50x50x645
Measures and weights					
Overall dimensions (l x w x h)	m	0,24x0,13x0,32	0,4x0,17x0,42	0,45x0,2x0,56	0,64x0,37x0,82
Weight	kg	17	45	69	163
Part No.		109536	109537	109538	109540



Hydraulic Tube Bender 1/2



Mobile tube bender with manual hydraulic pump for bending steel tubes larger diameters. Bending is done via dies that come in commonly used tube dimensions allowing bends up to 90°. Appropriate attachments for various diameters are included

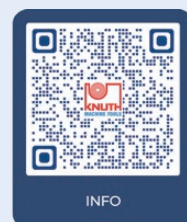
- Compact and mobile
- Dies included
- Powerful manual hydraulics

SPECIFICATIONS

Machine model numbers	Hydraulic Tube Bender 1/2" - 2"
-----------------------	------------------------------------

Working area

Pressure force	t	10
Part No.		129112



Accessories



Machine Accessories

Extensive accessories ranging from work lights and position indicators to occupational safety items.



Measuring Technology

Measuring tools and instruments, both analog and digital.



Tool Holders

Holders for machining tools for turning, drilling, and milling operations.



Machining Tools

Tools and tool sets for machining.



Workpiece Holding

Vices and clamping tables, as well as indexing heads, collets, and chucks.



Abrasives

Abrasive belts and grinding wheels for workshop machines up to CNC-controlled cylindrical and surface grinding machines.



Saw Blades

High-quality saw blades for band saws and circular saws.



Consumables

From cooling and lubricating fluids to consumables for EDM and cutting systems.

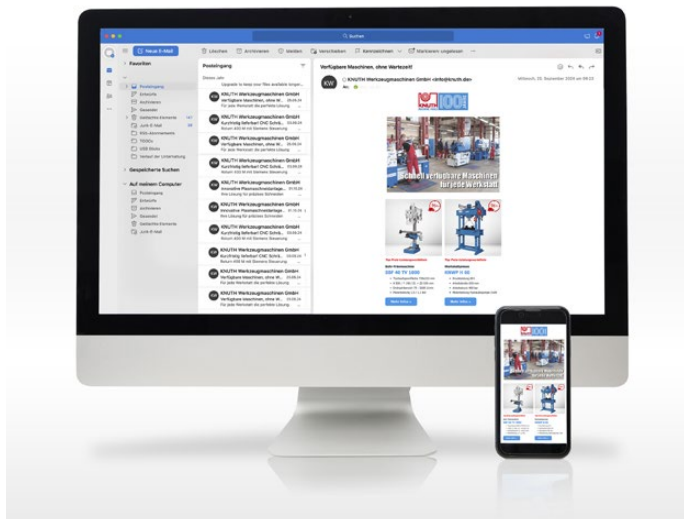


Operating and Workshop Equipment

Useful items for applications in craft and industry.

The new KNUTH Accessory Shop live! → Shop now





KNUTH Newsletter

Stay one step ahead.
Subscribe to our newsletter now!

Get exclusive insights and the latest offers –
delivered straight to your inbox.

Never miss a special promotion!

Subscribe now!



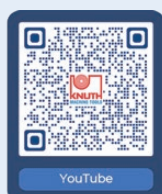
KNUTH on YouTube

KNUTH machines in action

On our YouTube channel, you'll find videos for nearly every machine in our product range.
We showcase machines from current deliveries, giving you insight into their handling, build quality, and machining performance.

**Interested in a machine
but can't find a recent video?**

Feel free to contact us!



KNUTH on Instagram

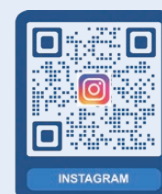
Have you seen our Instagram account yet?

We regularly post interesting content, news, and updates about our products and services.

Stay up to date and follow us on Instagram.

We look forward to connecting with you!

FOLLOW US

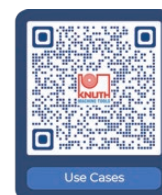


Case Studies

From small family businesses to globally recognized industrial companies – behind every successful production, there are powerful machines.

In our user stories, you'll discover how we work with our customers to develop customized solutions and how these prove themselves in daily production.

**Success firsthand.
Get inspired!**



The Entire World of Metalworking

More KNUTH Topic Catalogs:

Machining

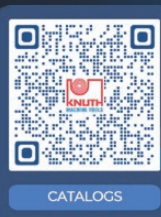
Modern conventional machine tools for turning, milling, drilling, sawing, and grinding – ideal for repair work, training, single-part production, and industrial use.

Cutting Technologies

We present state-of-the-art cutting technologies under one roof: laser and plasma cutting.

CNC Machining

Solutions for your production. Turning, milling, drilling, sawing, and grinding with modern technology.



Simply request it here:

Visit KNUTH Machine Tools!

At our locations in **Wasbek**, **Denkendorf** and **Bocholt**, we present machines and technologies covering the full spectrum of metalworking.

Headquarter

Schmalenbrook 14
24647 Wasbek / Neumünster
Tel. +49 (0) 4321 - 609-0
info@knuth.de

Demonstration Centre South

Alemannenstr. 19
85095 Denkendorf / Ingolstadt
Tel. +49 (0) 8466 9419-0
verkauf-sued@knuth.de

Showroom West

Prinzenstraße 2
46399 Bocholt
Tel. +49 (0) 15150966157
verkauf-west@knuth.de