

SINCE 1923



100 Years of Metalworking Expertise



www.knuth.com



QUALITY & SAFETY

At KNUTH Machine Tools, we take pride in our unwavering commitment to supplying quality and safe machinery for our customers. Our dedication to using only components from well-known brands guarantees the reliability and longevity of our machines. Every piece of equipment undergoes a rigorous inspection by our personnel to ensure that it meets stringent safety and quality standards before being shipped. Our ISO 9001:2015 and CE certifications stand as a testament to our pledge to providing exceptional quality and safety to our customers. You can trust in KNUTH Machine Tools to deliver top-of-the-line, dependable solutions.



TECHNICAL SUPPORT & SPARE PARTS

At KNUTH Machine Tools, we understand the importance of keeping our customers' machines running smoothly and we are committed to providing them with the highest level of technical support and spare parts capabilities. Our service is primarily performed by trained KNUTH personnel, or if necessary, by trusted service partners. We have teams of seasoned engineers available in all regions to offer consultation to our customers.

Our technical support is available from both our headquarters and subsidiaries, and we offer maintenance packages and remote maintenance on CNC machines. Additionally, we maintain a huge inventory of spare parts that are ready to ship to minimize machine downtime.

OUR VALUES

Customer Focus. We want to help companies realize their ideas and reliably and safely reach the next steps in their production at affordable costs.

Broad portfolio. Our extraordinarily broad portfolio covers almost all metalworking technologies, from entry-level machines to more sophisticated production machines.

After-Sales Service. Our support goes beyond just delivering the machine. We strive for long-term cooperation with our customers and provide comprehensive after-sales service, training and advice.



COMPLETE PRODUCT RANGE

Our extensive portfolio ranges from CNC and conventional machining technologies including lathes, mills, drilling and grinding machines to a wide variety of sheet metal working technologies such as laser, and plasma cutting machines, bending machines, shears and press brakes. We supply machines in various sizes, from small workshop drill presses to large

gantry-type CNC milling centers. Our products are carefully and responsibly sourced from trusted suppliers in various parts of the world including Korea, Taiwan and Turkey, who work closely with us to continuously drive product innovation and ensure consistent quality and reliability.





OUR PORTFOLIO



Lathes

CNC and
Conventional Lathes



Drilling Machines

Boring Renters, Radial and
Column Drilling Machines



EDM Machines

Wire Cut and Die Sinker
EDM Machines



Industrial Saws

Semi-automatic, NC controlled
and Vertical Saws



Sheet Metal Processing

Press Brakes, Shears, Folding and
Rolling Machines



Presses

Hydraulic and Workshop Presses



Milling Machines

CNC Milling Centers, Conventional and Servo-conventional



Laser Cutting Machines

Fiber Lasers up to 30 kW



Grinding Machines

Surface and Cylindrical, Tool- and Belt Grinding



Plasma Cutting Machines

Kjellberg and Hypertherm Plasma Sources



Accessories

Measuring Devices, Tool Holders, Saw Blades, Abrasives, and More



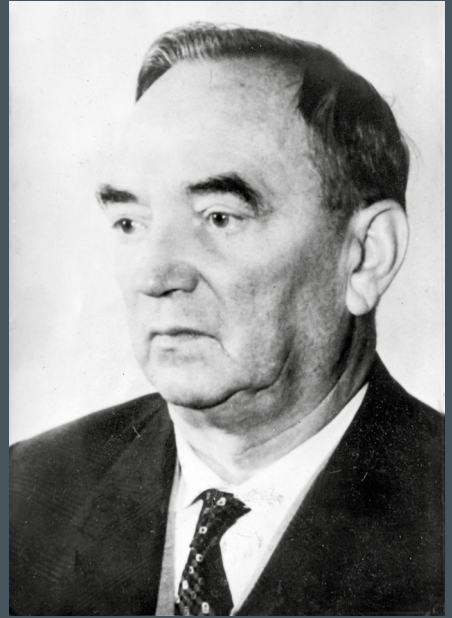
Service

Commissioning, Maintenance Services Repair and Spare Parts

HISTORY OF KNUTH

KNUTH Machine Tools has a long-standing history with 100 years of excellence in the manufacturing industry. From its humble beginnings as a supplier of industrial hardware and small machines in Königsberg, now Kaliningrad, over the re-establishment after World War II in Northern Germany, its focus has always been supplying the industry with the manufacturing equipment they need. By the end of the 1960s, a KNUTH portfolio had expanded to larger machines and accessories from India. In 1983, Karsten Knuth entered the family business and added to the portfolio conventional and CNC machine tools from Taiwan, later China, Turkey, South Korea, and many other countries.

The company grew into what it is today: A global player in manufacturing industry, actively doing business in 45 countries. A dedicated team of more than 200 employees is committed to delivering exceptional service and support to our customers, helping them achieve their manufacturing goals with confidence.



Gerhard Knuth, Founder, 1923



Current Leadership,
Kristian and Phillip
Knuth, 2023



HEADQUARTERS



DEALERS



SUBSIDIARIES



SERVICE PARTNERS

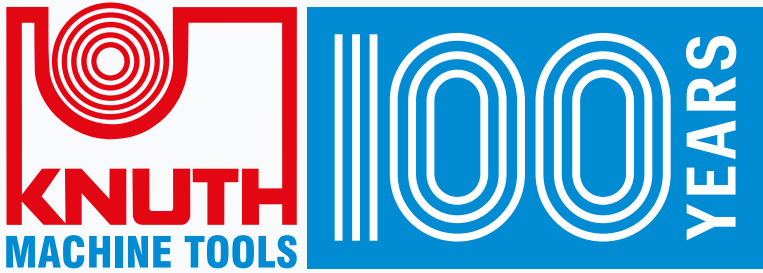
GLOBAL FOOTPRINT, LOCAL SUPPORT

With sales offices and service partners in 45 countries and a team of more than 200 employees, as well as all common models and variants in stock, we are at your side - no matter where you are.

Find your local KNUTH partner at www.knuth.com.

KNUTH Offices & Authorized Dealers:

- Algeria
- Bulgaria
- Czech Republic
- Egypt
- France
- Germany
- Hungary
- Indonesia
- Italy
- Latvia
- Malaysia
- Norway
- Romania
- Singapore
- South Africa
- Switzerland
- United States
- Vietnam



VISIT

www.knuth.com

FOR INSTANT ACCESS
TO THE LATEST CONTENT,
RESOURCES, VIDEOS,
AND PRODUCT INFORMATION

Hamburg, Germany

Schmalenbrook 14
24647 Wasbek / Neumünster
Germany

+49 (0) 4321 - 609 - 0

Denkendorf, Bavaria

Alemannenstr. 19
85095 Denkendorf / Ingolstadt
Germany

+49 (0) 8466 - 9419-0