



SKU : 470631

TRIAL MACHINE

The machine is tested and fully functional and comes with a 12-month warranty

The KMT M series features a solid construction and is of high quality. These modern plate shears are equipped with a powerful drive motor, and a straight cutter angle ensures minimum workpiece torsion during cutting. The high-precision back gauge is positioned manually.

- Solid steel weldment with sliding block guide
- Reversible cutters with multiple cutting surfaces
- Manual back gauge with travel display
- Work area secured by light curtain

TECHNICAL SPECS

WORKING AREA

Working length	1360 mm
Cutting angle	2 deg
Work table height	810 mm
Work table depth	390 mm
Number of support arms	2 positions
Support arms	450 mm
Strokes per minute	35 H/min

BACK GAUGE

Rear stop	750 mm
-----------	--------

CUTTING CAPACITIES

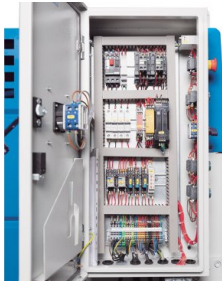
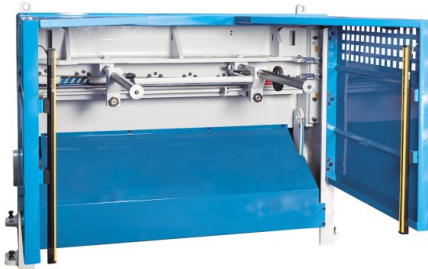
Plate thickness (min.) - 450 N/mm ²	0.25 mm
Plate thickness (max.) - 450 N/mm ²	3 mm

DRIVE CAPACITY

Motor rating main drive	3 kW
-------------------------	------

MEASURES AND WEIGHTS

Overall dimensions (length x width x height)	1.92 m x 2.1 m x 1.26 m
Weight	1250 kg



PRODUCT DETAILS

Machine Body and Drive System

- The machine frame is made of a very rigid, solid steel weldment and the cutter bar is sliding-block guided
- The upper cutters are reversible for use of both sides, and the lower cutters feature 4 cutting edges
- A rigid, continuous hold-down fixes the sheet metal plate right in front of the cut line

Material Support

- The rigid side angle stop simplifies alignment of the plate to the cut line
- Rugged support arms ensure a strong hold of large plates
- A wide support table simplifies workpiece handling

Ergonomic Design

- The bright LED illumination of the cut line creates a clearly visible shadow on the marked line
- Additionally, the smart machine enclosure design allows vertical view from the top for exact workpiece alignment
- An integrated cut counter keeps the user up to date
- All lubrication points and adjustment screws are easily accessible to simplify regular maintenance

Rear stop:

- The back gauge is positioned manually via a hand wheel
- An analog linear scale makes exact positioning easy and reduces down-times
- The easy accessible work area at the back gauge is secured by light curtain

Equipment

- The mobile foot switch gives the operator added flexibility and both hands are free for handling the workpiece
- High-quality electric components ensure reliable operation and maximum availability
- The full machine enclosure provides maximum safety, features a practical design and is precision machined

Standard Equipment

- 750 mm manual back gauge system
- Cut counter
- Cut line illumination
- Finger guard
- Light curtain
- Upper knife with 2 cutting edges / Lower knife with 4 cutting edges
- Foot switch with emergency stop switch
- Lateral stop with scale and T-slots
- Auflagearme
- Operation manual

All machines of this type in the 2024 KNUTH portfolio include a special cutter for machining stainless steel plates. (See part no. 133620 KMT M 1303)



KNUTH on YouTube Information to the point

On our YouTube channel you can find videos for nearly all machines from our program. We show the machines from current deliveries and you get an impression of the handling, the processing quality and the machining performance.

**Are you interested in a machine for which you cannot find a current video?
Please feel free to contact us!**