

# Vertical Milling Machines (Mills)

## SBF 40 M



**SKU : 470597**

### TRIAL MACHINE

The SBF is ideally suited for a wide variety of applications. Its powerful drive and wide speed range make it an ideal drill press. But it also serves as milling machine for light cutting jobs in steel and non-ferrous metals. This makes the SBS 40 a drill press with additional usability for an unbeatable price.

- Infinitely variable feed on X axis
- Automated drilling feed with depth display
- Gearbox milling head for powerful machining
- Swiveling head for wide range of applications

## TECHNICAL SPECS

### WORKING AREA

Table set up area	29 in x 8 in
Number of table T-slots	3 positions
T-slot table (width x spacing)	0.55 in x 1.97 in
T-slot foot (qty)	2 positions
T-slot foot (width x spacing)	0.55 in x 7.87 in
Quill stroke	5 in
Throat depth	11 in
Column diameter	5 in
Spindle nose-to-table surface distance	29 in
Spindle nose-to-foot distance	49 in
Drilling capacity in steel	1 in
Drilling capacity, cast iron	1.57 in
Head swivel range	± 90°
Tapping capacity, steel	(ST 37) M16

### TRAVELS

Travel X-axis	21.1 in
Travel Y-axis	7 in
Z1 / Z2 axis travel	37 in

### HEADSTOCK

Speed range	95 rpm - 3200 rpm
Spindle mount	MK 4 DIN 228

### RAPID FEED

Rapid feed	20 in/min
------------	-----------

### FEED

Work feed	0 in/min - 14 in/min
-----------	----------------------

### DRIVE CAPACITY

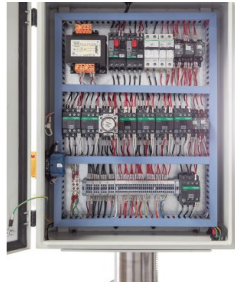
Main motor rating	13 / 18 Hp
-------------------	------------

### MEASURES AND WEIGHTS

Overall dimensions (length x width x height)	29 in x 30 in x 76 in
Weight	891 lbs



*Infinitely variable automatic feed on X axis*



*High-quality electric components*



*For drilling and milling*



*User-friendly control panel and digital depth indicator*

## PRODUCT DETAILS

### Machine Frame

- The SBF is a compact, easy-to-use column drill press with compound sliding table that also can be used for light milling work
- The generously sized table, column, and cutter head are made of solid cast-iron
- The work table features manual vertical adjustment and swivels around the column
- Wide dovetail guides on X and Y axes ensure great stability
- The infinitely variable TV 1000 feed motor on the linear axis ensures a consistent and efficient milling operation
- A rapid feed simplifies machine setup and shortens downtime during machining

### Cutter head

- The cutter head features manual vertical positioning and swivels to the left and right
- The milling machine's high-quality spindle bearing can withstand higher loads for the long term
- Tool mounts for milling tools are secured with a draw bar within the spindle
- The swiveling cutter head allows drilling and milling at various angles
- A two-step main spindle motor and the gears with oil bath lubrication provide a wide speed range
- High-quality electric components ensure reliable operation and maximum availability
- Integrated feed gears feature three gear steps for the automatic quill feed
- The high-precision quill micro-feed can also be operated via an auxiliary hand-wheel
- An adjustable stop gauge automatically stops the feed upon reaching the desired depth

### Equipment

- The exact quill stroke is displayed on a digital depth indicator
- The machine features a tapping feature with automatic spindle reversal upon reaching the preset thread depth
- A coolant system is integrated in the machine foot

### Sample product

- Only for markets outside the EU. Fully tested and fully functional machine, no warranty, but includes a 6-month warranty on replacement parts (wear parts excluded)
- For the EU market, we offer a wide portfolio of drill presses. Please visit our website for detailed information
- If you have questions regarding a product or sales limitations, please contact our sales experts

### Standard Equipment

- Automatic quill feed
- TV 1000 table feed
- Drill chuck diameter 0.51"
- Tool-holder bits
- Coolant system
- Operator manual