



Vertical Machining Centers VECTOR 850 M SI



SKU : 423513

CUSTOM MODEL

The Vector series is the compact all-in-one machining solution, designed and preconfigured for complex manufacturing challenges. The machines are designed using the latest FEM analysis software. The production takes place under strict quality control in order to guarantee perfect execution. Both the tried and tested Meehanite cast and the delta construction of the column ensure additional stability of the machine frame. The consistently high-quality components guarantee smooth operation during multiple shifts.

- Optimized frame design using FEM analysis
- Extra wide Y-shaped meehanite column for max. rigidity
- 30-bar through-spindle coolant to ensure optimum machining quality
- Built for multi-shift production
- High customization and automation possibilities
- 2 years standard warranty

TECHNICAL SPECS

WORKING AREA

Table dimensions	39 in x 22 in
Table load capacity	1760 lbs
Spindle nose-to-table surface distance	6 in - 28 in
Spindle center - column	20 in

TRAVELS

Travel X-axis	33.5 in
Travel Y-axis	22 in
Travel Z-axis	22 in
Guideway	Roller

HEADSTOCK

Spindle speed	10000 rpm
Spindle mount	SK 40
Torque, constant	42 ft.lb.
Spindle bearing	7012 x 4
Spindle drive method	Riemenantrieb

RAPID FEED

Rapid feed X-/ Y-axis	1417 in/min
Rapid feed Z-axis	590.55 in/min

FEED

Work feed X-axis	393.7 in/min
Work feed Y-axis	393.7 in/min
Work feed Z-axis	393.7 in/min

TOOL HEAD

Tool change type	Doppelarm
Number of tool stations	24 positions
Tool selection	Memory random
Tool size Ø x L (max.)	3.15 in x 11.81 in
Tool weight max.	15 lbs
Tool-change time tool/tool	1.8 sec
Tool-changing time chip/chip	3.9 sec

ACCURACIES

Repeatabilities	± 0003 / ± 0,00012" in
Positioning accuracies	± 0005/ 0,0002" in

DRIVE CAPACITY

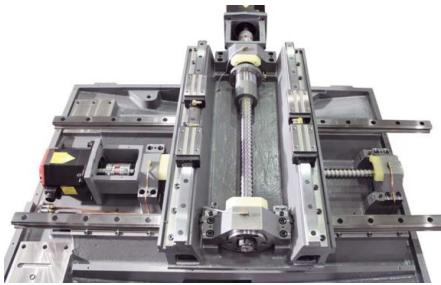
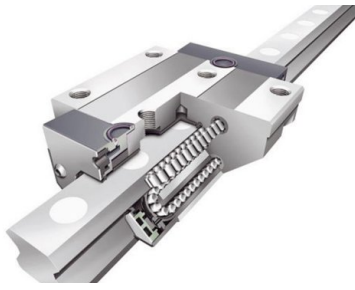
Main drive, continuous load	12.07 Hp
Total power consumption	15 kVA
Voltage	400 V
Mains frequency	50 Hz

CONTROL

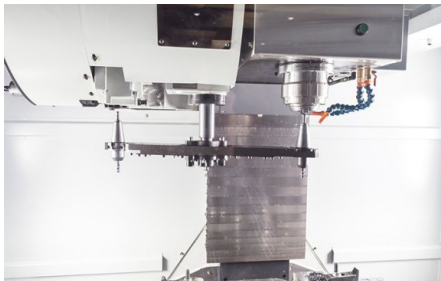
Control	Siemens
---------	---------

MEASURES AND WEIGHTS

Overall dimensions (length x width x height)	96 in x 87 in x 107 in
Weight	9460 lbs



Premium components for drive and guides guarantee accuracy and availability



Rapid tool changing with dual-arm gripper



SINUMERIK 828D control with its unique CNC performance sets new standards for productivity



PRODUCT DETAILS

Highlights

- Rigid machine structure with extra deep center of gravity and small footprint

Machine Design

- 30 mm preloaded ball screws combined with a digital drive package provide a rigid table guide and high torque
- A major focus during development of this machine was a space-saving design
- Dual-arm tool changer with 24 stations ensures adequate flexibility and capacity for every day production needs
- The Vector Series features linear guides on X, Y and Z to ensure high accuracy made possible by lower friction
- 435 psi internal cooling for optimum machining quality

Spindle

- Spindle runs on multiple bearings to ensure excellent absorption and dissipation of forces during machining

Tool Changer

- Changing times (1.8 seconds tool-to-tool and 3.9 seconds chip-to-chip) increase spindle up-time and machine output

Control Siemens Sinumerik 828D

- The top specialist for demanding milling operations
- Compact, robust, maintenance-free control panel-based CNC
- Comfortable program and parameter input via QWERTY keyboard
- 100 adjustable zero offsets
- Synchronous actions, and quick output of help functions
- Siemens Sinumerik 828 D
- Maximum machining precision
- Intelligent kinematic transformations for machining of cylindrical parts, and for angled workpiece levels
- SINUMERIK MDynamics with the new Advanced Surface feature: for perfect part surfaces and shortest machining times in die making applications
- Siemens Sinumerik 828D CNC highlights, specifications and features
- ShopMill: shortest programming time for single parts and small batch productions
- ProgramGUIDE: fastest machining time and maximum flexibility for high-volume series productions
- Unique spectrum of technology cycles - from milling contours with residual material recognition to process measurements
- Animated elements: unique operation and programming assistance with animated sequences
- Advanced data transfer options via USB stick, CF card and network (Ethernet)
- Easy message: maximum machine availability due to process monitoring per texting (SMS)
- SINUMERIK MDynamics package with Advanced Surface for mold making applications
- Jerk-limited acceleration
- Dynamic feed-forward control
- 4-axis simultaneous interpolation (X, Y, Z and rotary axis)
- Linear, circular and helical interpolation
- Tapping without compensating chuck, plus thread cutting
- Oriented spindle hold
- Toggle between inch and metric units
- FRAME concept for individual coordinate transformations, rotations, scaling and mirroring

Optional equipment: Preparation (wiring) for Renishaw TS 27R and OMP 40

STANDARD EQUIPMENT

Prepared for Renishaw TS 27
 Siemens 828D control with Shopmill
 Coolant flow through spindle, 30 bar with double filter
 24-station tool changer with dual-arm
 Main spindle motor 12 HP
 ST 40 mount

Spindle oil cooler
Chain-type conveyor with chip container
Electronic hand-wheel
Oil skimmer
Automatic central lubrication
Coolant gun
Chip flushing system
Heat exchanger for electric control cabinet
Telescoping axis cover
USB port
CF card reader
Totally enclosed work space
Work lamp
3-color signal lamp
Coolant system
Adjustable machine feet
Operating tools
Operator instructions

OPTIONAL EQUIPMENT

- Siemens Function: P25: 3D Simulation, SKU : 253378
- Siemens Function: P13: Residual Material Detection, SKU : 253379
- Siemens Function: P22: Simultaneous Recording, SKU : 253380
- Siemens measuring cycles, SKU : 253438