



### SKU : 362695

The versatile universal milling machine complements the tried and tested UWF 3. Both models have the large work area, the universal milling head and the horizontal spindle in common. The new UWF 3.2, however, has a slightly higher speed range and an infinitely variable servomotor feed, which extends its range of application. Together with the extensive equipment, this model is also ideally suited for repair workshops as well as training and production departments.

- Universal cutter head swivels on 2 levels
- Outer arbor support for horizontal milling
- Swiveling milling table
- Servo-feed on all axes with rapid feed
- Extensive standard equipment

## TECHNICAL SPECS

### WORKING AREA

Table set up area	1370 mm x 320 mm
Table load capacity (max.)	260 kg
Table swivel range r/l	45 deg
Number of T-slots	3 positions
T-slot (width x spacing)	14 mm x 80 mm

### TRAVELS

Travel X-axis	1000 mm
Travel Y-axis	360 mm
Travel Z-axis	400 mm

### VERTICAL MILLING HEAD

Spindle speed (vertical)	45 1/min - 1660 1/min
Spindle mount	SK 40 DIN 2080
Throat	300 mm - 765 mm
Vertical spindle-to-table surface distance	260 mm - 660 mm
Milling head swivel range	360 deg

### RAPID FEED

Rapid feed X-/ Y-axis	1335 mm/min
Rapid feed Z-axis	1000 mm/min

### HORIZONTAL MILLING SPINDLE

Spindle speed (horizontal)	35 1/min - 1500 1/min
Spindle mount	SK 40 DIN 2080
Horizontal spindle-to-table surface distance	75 mm - 475 mm

### FEED

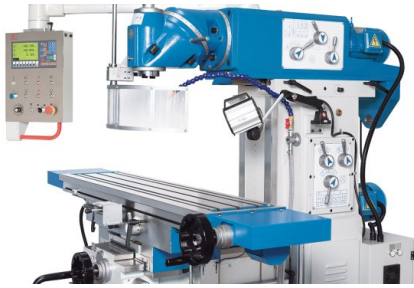
Feed speed X-axis	30 mm/min - 830 mm/min
Feed speed Y-axis	30 mm/min - 830 mm/min
Feed speed Z-axis	23 mm/min - 625 mm/min

### DRIVE CAPACITY

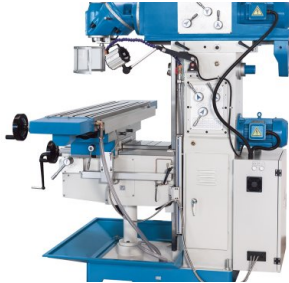
Motor rating horiz./ vert.	3 kW
----------------------------	------

### MEASURES AND WEIGHTS

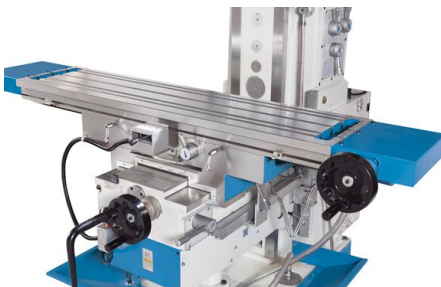
Overall dimensions (length x width x height)	1.9 m x 1.75 m x 2 m
Weight	1950 kg



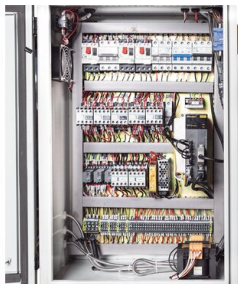
*The universal cutter head features 2 swivel levels and can be moved to virtually any spatial angle*



*The milling table features a large setup area and can be rotated in linear direction*



*Large rectangle guideways ensure maximum precision and quiet operation*



*Premium components and clean wiring minimize the risk of failures and down-times*

## PRODUCT DETAILS

- Extremely rigid machine bed made of high-strength HT-200 cast-iron with heavy ribbing
- Large rectangular guideways ensure precision and quiet operation within permissible high loads
- Precision-ground guideways with hardened surfaces for long-term accuracy and wear-resistance
- The milling table features a large setup area and can be rotated in linear direction
- Quiet, precision-made headstock gears with hardened and ground gears
- Universal cutter head swivels on 2 planes - quick change-over from horizontal to vertical machining
- By combining both swivel levels, almost any spatial angle can be set
- Standard outer arbor support with bronze plain bearings accommodates long milling arbors in the horizontal spindle
- Powerful servo-motor for infinite variation of feeds in all 3 axes
- Minimum downtime due to rapid positioning of work table and rapid feeds in all axes
- Control panel swivels for comfortable operation
- Coolant system and chip tray are included

## STANDARD EQUIPMENT

3-axis position indicator X.Pos 3.2  
 Collet chuck with collets (4,5,6,8,10,12,14,16 mm diam.)  
 Horizontal arbor Ø 27 mm  
 Outer arbor support for horizontal milling  
 Chip tray  
 Coolant system  
 Central lubrication  
 M16 draw bar  
 LED work lamp  
 Operating tools  
 Operator instructions

## KNUTH on YouTube Information to the point

On our YouTube channel you can find videos for nearly all machines from our program. We show the machines from current deliveries and you get an impression of the handling, the processing quality and the machining performance.

**Are you interested in a machine for which you cannot find a current video?  
Please feel free to contact us!**

