

Vertical Milling Machines (Mills)

UWF 3.2



SKU : 362695

The versatile universal milling machine complements the tried and tested UWF 3. Both models have the large work area, the universal milling head and the horizontal spindle in common. The new UWF 3.2, however, has a slightly higher speed range and an infinitely variable servomotor feed, which extends its range of application. Together with the extensive equipment, this model is also ideally suited for repair workshops as well as training and production departments.

- Universal cutter head swivels on 2 levels
- Outer arbor support for horizontal milling
- Swiveling milling table
- Servo-feed on all axes with rapid feed
- Extensive standard equipment

TECHNICAL SPECS

WORKING AREA

Table set up area	54 in x 13 in
Table load capacity (max.)	572 lbs
Table swivel range r/l	45 deg
Number of T-slots	3 positions
T-slot (width x spacing)	0.55 in x 3.15 in

TRAVELS

Travel X-axis	39.4 in
Travel Y-axis	14 in
Travel Z-axis	16 in

VERTICAL MILLING HEAD

Spindle speed (vertical)	45 rpm - 1660 rpm
Spindle mount	SK 40 DIN 2080
Throat	12 in - 30 in
Vertical spindle-to-table surface distance	10.24 in - 25.98 in
Milling head swivel range	360 deg

RAPID FEED

Rapid feed X-/ Y-axis	53 in/min
Rapid feed Z-axis	39.37 in/min

HORIZONTAL MILLING SPINDLE

Spindle speed (horizontal)	35 rpm - 1500 rpm
Spindle mount	SK 40 DIN 2080
Horizontal spindle-to-table surface distance	3 in - 19 in

FEED

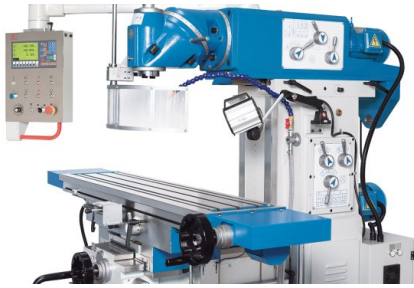
Feed speed X-axis	1.1811 in/min - 32.6771 in/min
Feed speed Y-axis	1 in/min - 33 in/min
Feed speed Z-axis	0.9055 in/min - 24.6063 in/min

DRIVE CAPACITY

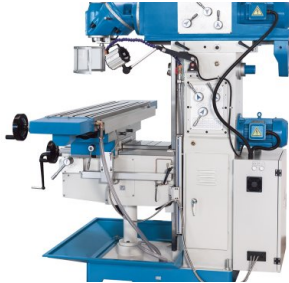
Motor rating horiz./ vert.	4 Hp
----------------------------	------

MEASURES AND WEIGHTS

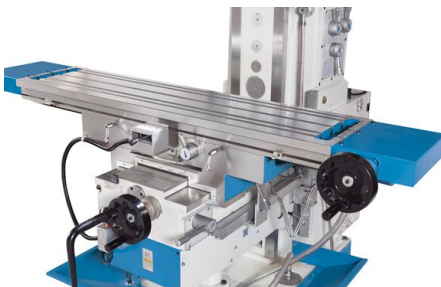
Overall dimensions (length x width x height)	75 in x 69 in x 79 in
Weight	4290 lbs



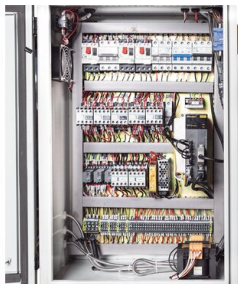
The universal cutter head features 2 swivel levels and can be moved to virtually any spatial angle



The milling table features a large setup area and can be rotated in linear direction



Large rectangle guideways ensure maximum precision and quiet operation



Premium components and clean wiring minimize the risk of failures and down-times

PRODUCT DETAILS

- Extremely rigid machine bed made of high-strength HT-200 cast-iron with heavy ribbing
- Large rectangular guideways ensure precision and quiet operation within permissible high loads
- Precision-ground guideways with hardened surfaces for long term accuracy and wear resistance
- The milling table features a large setup area and can be rotated in linear direction
- Quiet, precision-made headstock gears with hardened and ground gears
- Universal cutter head swivels on 2 planes - quick change-over from horizontal to vertical machining
- By combining both swivel levels, almost any angle can be set
- Standard outer arbor support with bronze plain bearings accommodates long milling arbors in the horizontal spindle
- Powerful servo-motor for infinite variation of feeds in all 3 axes
- Minimum downtime due to rapid positioning of work table and rapid feeds in all axes
- Control panel swivels for comfortable operation
- Coolant system and chip tray are included

STANDARD EQUIPMENT

3-axis position indicator X.Pos 3.2
 Collet chuck with collets (0.16",0.2",0.24",0.31",0.39",0.47",0.55",0.63" diam.)
 Horizontal milling arbor, 27 mm diam.
 Outer arbor support for horizontal milling
 Chip tray
 Coolant system
 Central lubrication
 M16 draw bar
 LED work lamp
 Operating tools
 Operator instructions