



## SKU : 181432

The Vector series is the compact all-in-one machining solution, designed and preconfigured for complex manufacturing challenges. The machines are designed using the latest FEM analysis software. The production takes place under strict quality control in order to guarantee perfect execution. Both the tried and tested Meehanite cast and the delta construction of the machine frame ensure additional stability of the machine frame. The consistently high-quality components guarantee smooth operation during multiple shifts.

- Available with Siemens or Heidenhain controller
- Extra-wide Y-shaped Meehanite column for maximum stability
- 30-bar CTS to ensure optimum machining quality
- Designed for multi-shift operation
- Many customization and automation possibilities

## TECHNICAL SPECS

### WORKING AREA

Table dimensions	1000 mm x 550 mm
Table load capacity	800 kg
Spindle nose-to-table surface distance	150 mm - 700 mm
Spindle center - column	520 mm

### TRAVELS

Travel X-axis	850 mm
Travel Y-axis	550 mm
Travel Z-axis	550 mm
Guideway	Roller

### HEADSTOCK

Spindle speed	10000 1/min
Spindle mount	SK 40 ISO 7388-1 (DIN 69871)
Torque, constant	57 Nm
Spindle bearing	7012 x 4
Spindle drive method	Riemenantrieb

### RAPID FEED

Rapid feed X-/ Y-axis	36000 mm/min
Rapid feed Z-axis	15000 mm/min

### FEED

Work feed X-axis	10000 mm/min
Work feed Y-axis	10000 mm/min
Work feed Z-axis	10000 mm/min

### TOOLING

Tool changer type	Doppelarm
Number of tool stations	24 positions
Tool selection	Memory random
Tool size Ø x L (max.)	80 mm x 300 mm
Tool weight max.	7 kg
Tool-change time tool/tool	1.8 sec
Tool-changing time chip/chip	3.9 sec

### ACCURACIES

Repeatabilities	± 0,003 / ± 0.00012" mm
Positioning accuracies	± 0,005/ 0.0002" mm

### DRIVE CAPACITY

Main drive, continuous load	9 kW
Total power consumption	15 kVA
Voltage	400 V
Mains frequency	50 Hz

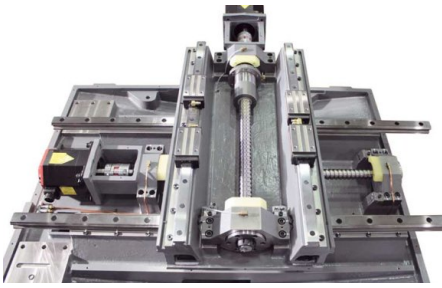
### CONTROL

Control	Siemens
---------	---------

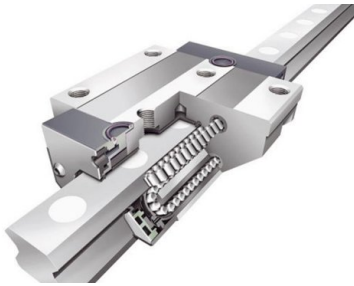
### MEASURES AND WEIGHTS

Overall dimensions (length x width x height)	2.42 m x 2.2 m x 2.7 m
Weight	4300 kg

## PRODUCT DETAILS



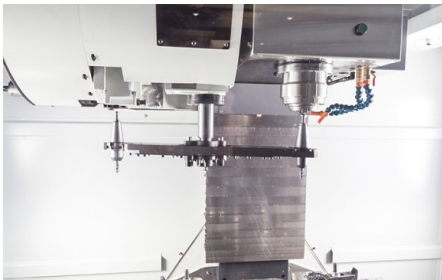
Linear guides and preloaded ball screws



Linear-roller guides for super quiet operation



Siemens Sinumerik 828D with ShopMill



Tool changer with double-arm and BT40 spindle



Wide opening front doors

### Highlights

- Rigid machine structure with extra deep center of gravity and small footprint

### Machine Design

- 30 mm preloaded ball screws combined with a digital drive package provide a rigid table guide and high torque
- A major focus during development of this machine was a space-saving design
- Dual-arm tool changer with 24 stations ensures adequate flexibility and capacity for every day production needs
- The Vector Series features linear guides on X, Y and Z to ensure high accuracy made possible by lower friction
- 30-Bar internal cooling for optimum machining quality

### Spindle

- Spindle runs on multiple bearings to ensure excellent absorption and dissipation of forces during machining

### Tool Changer

- Changing times (1.8 seconds tool-to-tool and 3.9 seconds chip-to-chip) increase spindle up-time and machine output

### Control Siemens Sinumerik 828D

- The top specialist for demanding milling operations
- Compact, robust, maintenance-free control panel-based CNC
- Comfortable program and parameter input via QWERTY keyboard
- 100 adjustable zero offsets
- Synchronous actions, and quick output of help functions
- Siemens Sinumerik 828 D Milling
- Maximum machining precision
- Intelligent kinematic transformations for machining of cylindrical parts, and for angled workpiece levels
- SINUMERIK MDynamics with the new Advanced Surface feature: for perfect part surfaces and shortest machining times in mold making applications
- Highlights & CNC performance data and functions Siemens Sinumerik 828 D Milling
- ShopMill: shortest programming time for single parts and small batch productions
- ProgramGUIDE: fastest machining time and maximum flexibility for large series productions
- Unique spectrum of technology cycles - from milling contours with residual material recognition to process measurements
- Animated Elements: unique operation and programming assistance with animated sequences
- Modern data transfer options via USB stick, CF card and network (Ethernet)
- Easy Message: maximum machine availability due to process monitoring per texting (SMS)
- SINUMERIK MDynamics package with Advanced Surface for mold making applications
- Jerk-limited acceleration
- Dynamic feed-forward control
- 4-axis simultaneous interpolation (X, Y, Z and rotary axis)
- Linear, circular and helical interpolation
- Tapping without compensating chuck, plus thread cutting
- Oriented spindle hold
- Toggle between inch and metric units
- FRAME concept for individual coordinate transformations, rotations, scaling and mirroring

## CONTROLS & SOFTWARE

### Siemens 828D control with Shopmill

## SINUMERIK 828 D – The workhorse in the compact class of CNCs

### Highlights

- Compact, robust, maintenance-free control panel-based CNC
- Comfortable program and parameter input via QWERTY keyboard
- Maximum machining precision
- Intelligent kinematic transformations for machining of cylindrical parts, and for angled workpiece levels
- SINUMERIK MDynamics with the new Advanced Surface feature: for perfect part surfaces and shortest machining times in mold making applications
- ShopMill: shortest programming time for single parts and small batch productions
- ProgramGUIDE: fastest machining time and maximum flexibility for large series productions
- Unique spectrum of technology cycles - from milling contours with residual material recognition to process measurements
- Animated Elements: unique operation and programming assistance with animated sequences
- Modern data transfer options via USB stick, CF card and network (Ethernet)
- Easy Message: maximum machine availability due to process monitoring per texting (SMS)

### CNC hardware

- Control-panel based high-performance CNC Control
- Robust front control panel made of magnesium die-casting
- Integrated full-size QWERTY keyboard
- Maintenance-free design (no buffer battery required)

### CNC performance data and functions

- SINUMERIK MDynamics package with Advanced Surface for mold making applications
- Dynamic feed-forward control
- 4-axis simultaneous interpolation (X, Y, Z and rotary axis)
- Linear, circular and helical interpolation
- Tapping without compensating chuck, plus thread cutting
- Oriented spindle holder
- Toggle between inch and metric units
- FRAME concept for individual coordinate transformations, rotations, scaling and mirroring
- 100 adjustable zero offsets
- Synchronous actions and quick help function output

### CNC technology cycles

- Technology cycles for programGUIDE and ShopMill work step programming are available
- Large selection of drilling cycles
- Large selection of milling cycles for standard geometry
- Large selection of position patterns for drilling and milling operations
- High-speed settings for mold making applications
- Geometry calculator for free contour input
- Machining cycle for contour pockets / contour spigots with isolated contours

### Graphic features

- Animated Elements: input help for machining parameters with animated sequences
- Graphical online help system, similar to PC system
- Graphical CNC simulation with level display

### CNC tool management

- Display of tool and magazine data on one screen
- Tool management with plain-text tool names
- Loading/unloading feature for easy magazine assignment
- Tool management with tool life monitoring
- 10.4" TFT color monitor
- Jerk-limited acceleration

## STANDARD EQUIPMENT

Ethernet port (LAN)  
Preparation for Renishaw TS 27 R  
Siemens 828D control with Shopmill

Coolant through spindle 30 bar with double filter  
 24-station tool changer with dual-arm  
 Main spindle motor 9 kW  
 ST 40 mount  
 Spindle oil cooler  
 Chain-type conveyor with chip container  
 Electronic hand-wheel  
 Oil skimmer  
 Automatic central lubrication  
 Coolant system flush gun  
 Chip wash system  
 Heat Exchanger for electric control cabinet  
 Telescoping axis cover  
 USB port  
 CF card reader  
 Totally enclosed work space  
 Work lamp  
 3-color signal lamp  
 Coolant system  
 Adjustable machine feet  
 Operating tools  
 Operator instructions

## OPTIONAL EQUIPMENT

- Upgrade Spindle Taper from SK40 to HSK63, SKU : 253953
- Top cover for X.Mill/Vector 650-1000, SKU : 252819
- Renishaw OMP 40 Workpiece Measuring, SKU : 252820
- Arm Type BT40 upg. from 24 to 30 tools, SKU : 252967
- Connection for 4th axis (wiring only and axis chart), SKU : 253019
- Siemens Function: P25: 3D Simulation, SKU : 253378
- Siemens Function: P13: Residual Material Detection, SKU : 253379
- Siemens Function: P22: Simultaneous Recording, SKU : 253380
- Renishaw Tool Setter TS27R, SKU : 253386
- Measuring Cycles, SKU : 253438
- Renishaw OTS wireless tool setter (OTS), SKU : 253598
- Ø170mm 4th axis (4th axis, servo motor, driver, air brakes)(Si), SKU : 253605
- Ø210mm 4th axis (4th axis, servo motor, driver, air brakes)(Si), SKU : 253606
- Spindle speed upgrade 10.000 to 12.000 rpm (belt type), SKU : 253609
- preparation for Renishaw OMP40, SKU : 253613
- manual tailstock ST-170T for rotary table for X.mill, SKU : 253618
- manual tailstock ST-210T for rotary table for X.mill, SKU : 253619
- manual 6" chuck for rotary table for X.mill, SKU : 253622
- manual 8" chuck for rotary table for X.mill, SKU : 253623
- Upgrade from 10.4" to 15" touch screen (for PPU260 or higher), SKU : 253674
- Renishaw OMP 60 workpiece measuring system (BT40), SKU : 253681
- 200 mm diam. 4th & 5th axis for Vector 650/850/1000 (Si), SKU : 253682
- Upgrade from 828D PPU260 to 840DSL IPC447E 10.4" for Vector, SKU : 253835
- Upgrade Spindle Taper from SK40 to BBT 40, SKU : 253951
- 12,000 rpm, direct drive CTS for Vector 650-1200(Si), SKU : 253956
- Z axis travel upgrade from 550 to 800 mm for X.mill, SKU : 253625