

Horizontal Metal Cutting Bandsaws

ABS 540 S NC

SKU : 152843

The ABS S NC is a high-performance production band saw with a dual column design. The material is fed via a controlled servo motor with ball screw drive and measuring system with a positioning and repeat accuracy of ± 0.2 mm. The Omron touchscreen controller can store up to 30 programs with 50 steps each. For additional flexibility, this series also offers hydraulic bundle clamping as an option. The manually set mitre angle can be read on a digital display. The workpiece is clamped hydraulically.

- Double-column design with precise linear guidance
- Mitre cutting with hydraulic workpiece clamping and digital display
- Omron touchscreen controller for fast programming and setup
- Material servo-feeding for high precision ± 0.2 mm
- Automated stroke height control with optical sensor



TECHNICAL SPECS

WORKING AREA

Minimum cut length	15 mm
Remaining length	190 mm

CUTTING CAPACITIES

Feed per single stroke (max.)	700 mm
Cutting speed	15 m/min - 120 m/min
Cutting capacity 0° (round)	540 mm
Cutting capacity 0° (flat) (length x width)	690 mm x 540 mm
Cutting capacity 0° (square)	540 mm
Cutting capacity 30° (round)	540 mm
Cutting capacity 30° (flat) (length x width)	550 mm x 540 mm
Cutting capacity 30° (square)	540 mm
Cutting capacity 45° (round)	470 mm
Cutting capacity 45° (flat) (length x width)	410 mm x 540 mm
Cutting capacity 45° (square)	410 mm
Max. feed length (multiple strokes)	9.999 mm

ACCURACIES

Positioning accuracy (multiple strokes)	02 mm
---	-------

CUTTING CAPACITY IN SEMI-AUTOMATIC MODE

Cutting capacity 60° (round)	250 mm
Cutting capacity 60° (flat) (length x width)	240 mm x 540 mm
Cutting capacity 60° (square)	240 mm

DRIVE CAPACITY

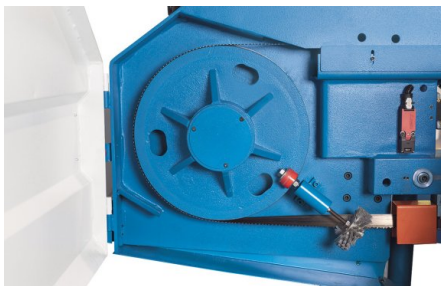
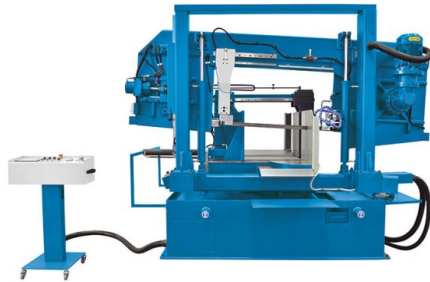
Motor rating main drive	4 kW
Motor rating hydraulic pump	22 kW
Motor rating coolant pump	0.12 kW

MEASURES AND WEIGHTS

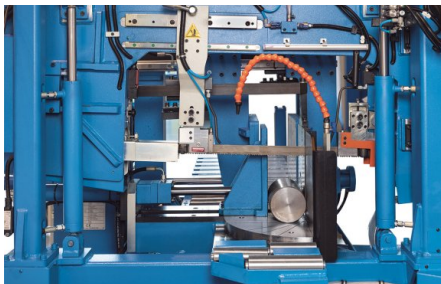
Blade dimensions	6.000 mm x 41 mm x 1.3 mm
Overall dimensions (length x width x height)	3 m x 2.42 m x 2.25 m
Weight	4.190 kg



Reliable OMRON control with rugged touchscreen input panel



Chips around the saw blade are removed by a brush for increased efficiency and long tool life



PRODUCT DETAILS

- The ABS S NC is a fully automated horizontal band saw series with parallel guiding system, which is ideally suited for series production with mitre cuts in solid materials, tubes, and profiles
- The workpiece feed with servo motor drive and preloaded ball screws deliver maximum precision
- The combination of linear guides and box ways result in low maintenance, long tool life and extreme ruggedness under heavy production conditions
- The saw frame, including guide frame, can be rotated manually up to 60° and fixed in the selected position via a hydraulic clamping device
- The fully automated mode allows mitre cut angles up to 45°, and the semi-automatic mode up to 60°
- The exact saw frame angle can easily be checked by the operator on a digital display
- A slight 3° inclination of the saw frame on the cutting axis increases cutting capacity and saw blade life
- Rigid saw blade guides ensure vertical angular accuracy
- The reliable hydraulic unit provides the controlled clamping force for workpiece clamping
- Hydraulically controlled saw frame micro-feed
- The reliable Omron control with touchscreen allows for easy and convenient programming for a fully automated operation
- Unnecessary downtime is reduced by an optically controlled change-over from rapid feed to work feed
- A motor with infinitely variable speeds transmits power via a continuous-operation idler gear to the machine drive wheel
- The correct saw blade tension can be verified directly at the pressure gauge display
- An automatic band breakage control, a high-performance coolant system, and a chip brush complement the standard equipment package
- Available options for this series include Minimal Quantity Lubrication (MQL) and hydraulic bundle clamping

CONTROLS & SOFTWARE

Omron control with touchscreen

Intuitive operation and efficient control of all parameters

- Reliable OMRON control with rugged touchscreen input panel
- High-precision workpiece feed via servo motor and preloaded ball screws
- Up to 30 cutting jobs, each with 50 cut positions, can be programmed and saved
- Number of programs: 30
- Working steps in the program: 50

STANDARD EQUIPMENT

Omron control with touchscreen
Automatic workpiece feed (servo)
Hydraulic part clamping
hydraulic cutting angle clamping
Optical height adjustment
Saw-band
Mechanical saw blade tensioning with hydraulic pressure gauge
Saw blade cleaner brush
Coolant system
Operating tools
Operator manual

OPTIONAL EQUIPMENT

- 3 meter roller table, SKU : 253826
- Hydraulic bundle clamping, SKU : 253717
- Minimum quantity cooling, SKU : 253719
- Clamping force controlled at operator panel, SKU : 253808
- Chip conveyor, SKU : 253891
- Hydraulic saw blade tensioning, SKU : 253824
- Laser pointer, SKU : 253753
- Micro spray cooling system for band saws 400-810, SKU : 254015