

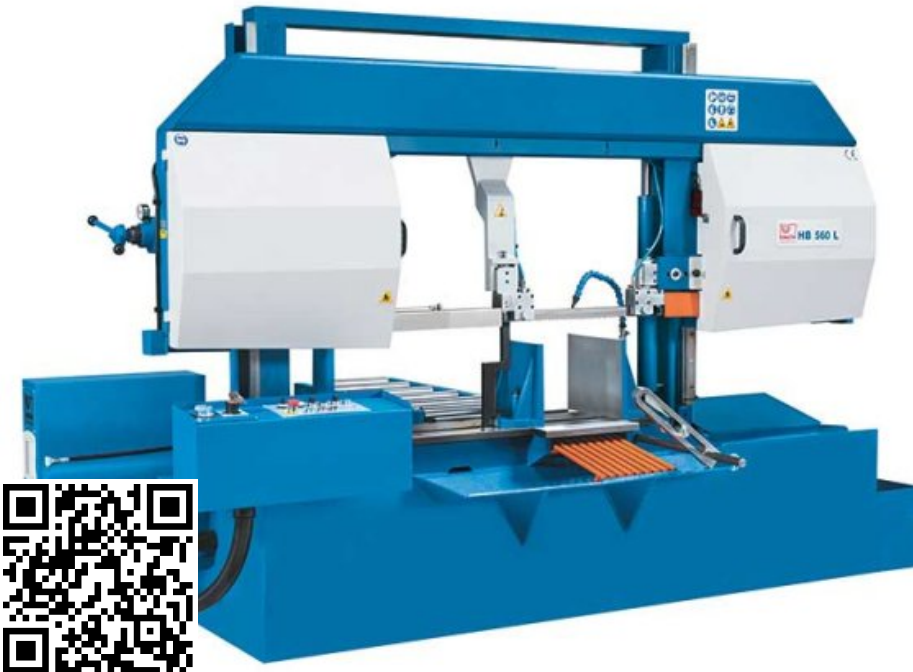
# Horizontal Mitre Cutting Bandsaws

## HB 1020 L

**SKU : 152808**

The semi-automatic horizontal band saws of the HB-L series are the first choice for applications in the category of heavy cutting. They cut heavy workpieces made of steel, cast iron and other materials with high precision. The machines are characterized by a rigid and extremely stable dual column construction. Reduced vibrations enable shorter cutting times and higher accuracy. Functions such as the finely adjustable saw blade feed, the continuously adjustable saw blade speed and the swiveling workpiece clamping contribute to the excellent cutting performance of the HB-L series.

- Double column design with linear guide
- Semi-automatic operation
- Automatic stroke height adjustment with optical sensor
- 45° swiveling vise for miter cutting
- Short setup time for machine and workpiece



### TECHNICAL SPECS

#### CUTTING CAPACITIES

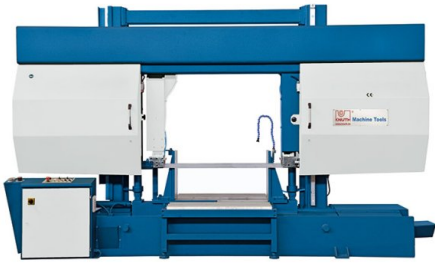
Cutting capacity 0° (round)	40 in
Cutting capacity 0° (square)	40 in
Cutting capacity 0° (flat) (length x width)	40 in x 40 in
Cutting capacity 45° (flat) (length x width)	27 in x 40 in
Cutting capacity 45° (round)	27 in
Cutting capacity 45° (square)	27 in
Cutting speed	65.4 fpm - 327 fpm

#### DRIVE CAPACITY

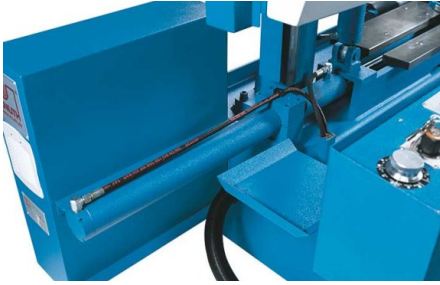
Motor rating main drive	10.1 Hp
Motor rating hydraulic pump	3 Hp
Motor rating coolant pump	0.2 Hp

#### MEASURES AND WEIGHTS

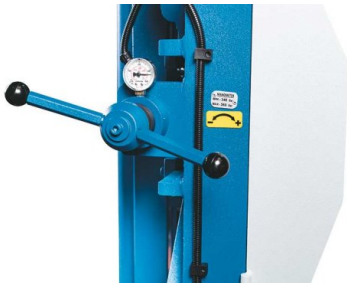
Blade dimensions	374.02 in x 2.13 in x 0.06 in
Overall dimensions (length x width x height)	178 in x 67 in x 109 in
Weight	12892 lbs



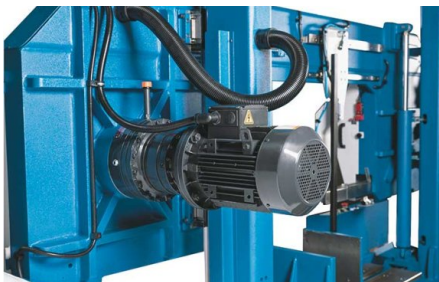
*HB1020 L - easy material handling through input / output rollers*



*Hydraulic workpiece clamping is now included on all models*



*Pressure gauge ensures correct saw blade tension for increased blade life and cost reduction*



*Powerful main drive motor, infinitely variable*

## PRODUCT DETAILS

- Torsion-proof steel construction with dual-column guide – rigid and vibration absorbing
- The saw frame features a mono-frame design for travel across large linear guides
- Advanced hydraulic saw frame feed with new pressure regulating system (PAS) allows optimum adjustment for every sawing task: infinitely variable feed speed and cutting power control provide a wide spectrum of machining possibilities with just one saw blade type
- The control valve features identifications and labeling for sheets, solid materials and various other material types to provide maximum user-friendly handling
- Optical registration of the workpiece height allows fully automated empty runs in rapid feed mode for a timely optimum change-over to work feed as well as limiting the vertical saw frame travel and keeping down-times to a minimum
- Every model of this series provides infinitely variable cutting speeds from 66 to 328 ft/min
- Powerful, low-maintenance motors for high reliability
- Hydraulic workpiece clamping is now standard equipment on all models
- Pressure gauge ensures correct saw blade tension for increased blade life and lower cost
- Removable coolant reservoir for simplified maintenance
- Hydraulic saw blade tensioning (HB 810 L and 1020 L)
- Saw blade tension can be precisely adjusted via a pressure gauge

## STANDARD EQUIPMENT

Feed roller table 3 ft  
 Bimetallic band saw blade  
 Hydraulic part clamping  
 Hydraulic workpiece clamping  
 Input / output rollers  
 Automatic stroke height adjustment  
 Automatic stroke height adjustment  
 Coolant system  
 Infinitely variable cutting speed  
 Operator instructions

## OPTIONAL EQUIPMENT

- 3 meter roller table for HB 1020 L, SKU : 251843
- hydraulic top clamping for HB 1020 L, SKU : 251841
- chip conveyor for HB 1020 L, SKU : 251845
- motorized 3 meter roller table for HB 1020 L, SKU : 251844
- Turn Table for HB 1020 L, SKU : 251846
- 3 m Feed Roller Table with linear stop and digital display for HB 1020 L, SKU : 257423
- Minimum quantity cooling, SKU : 253719
- Laser pointer, SKU : 253753
- Clamping force controlled at operator panel, SKU : 253899