



SKU : 133622

The KMT M series features a solid construction and is of high quality. These modern plate shears are equipped with a powerful drive motor, and a straight cutter angle ensures minimum workpiece torsion during cutting. The high-precision back gauge is positioned manually.

- Solid steel weldment with sliding block guide
- Cutters for stainless steel cutting are included
- Reversible cutters with multiple cutting surfaces
- Manual back gauge with travel display
- Work area secured by light curtain

TECHNICAL SPECS

WORKING AREA

Working length	81 in
Cutting angle	1.3 deg
Work table height	32 in
Work table depth	15 in
Number of support arms	2 positions
Support arms	18 in
Strokes per minute	35 H/min

BACK GAUGE

Rear stop	30 in
-----------	-------

CUTTING CAPACITIES

Plate thickness (min.) - 450 N/mm ²	0.01 in
Plate thickness (max.) - 450 N/mm ²	0.118 in
Plate thickness(max.) - 700 N/mm ²	0.059 in

DRIVE CAPACITY

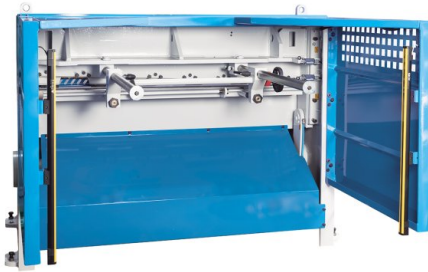
Motor rating main drive	5.4 Hp
-------------------------	--------

MEASURES AND WEIGHTS

Overall dimensions (length x width x height)	105 in x 83 in x 50 in
Weight	3850 lbs



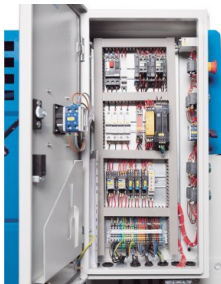
Robust lateral stop with scale



Manual back gauge with long travel



Back gauge is protected via sturdy enclosure and light curtain



Clearly structured layout of components simplifies maintenance and troubleshooting

PRODUCT DETAILS

Machine Body and Drive System

- The machine frame is made of a very rigid, solid steel weldment and the cutter bar is sliding-block guided
- The high-precision guide ensures clean cuts and special cutters for machining stainless steel plates are included
- The upper cutters are reversible for use of both sides, and the lower cutters feature 4 cutting edges
- A rigid, continuous hold-down fixes the sheet metal plate right in front of the cut line

Material Support

- The rigid side angle stop simplifies alignment of the plate to the cut line
- Rugged support arms ensure a strong hold of large plates
- A wide support table simplifies workpiece handling

Ergonomic Design

- The bright LED illumination of the cut line creates a clearly visible shadow on the marked line
- Additionally, the smart machine enclosure design allows vertical view from the top for exact workpiece alignment
- An integrated cut counter keeps the user up to date
- All lubrication points and adjustment screws are easily accessible to simplify regular maintenance

Rear stop:

- The back gauge is positioned manually via a hand wheel
- An analog linear scale makes exact positioning easy and reduces down-times
- The easy accessible work area at the back gauge is secured by light curtain

Equipment

- The mobile foot switch gives the operator added flexibility and both hands are free for handling the workpiece
- High-quality electric components ensure reliable operation and maximum availability
- The full machine enclosure provides maximum safety, features a practical design and is precision machined

STANDARD EQUIPMENT

Manual back gauge 29.5"
cut counter
cut-line lighting
finger guard
light curtain
upper cutter with 2 cutting edges / Lower cutter with 4 cutting edges
foot switch with emergency stop switch
lateral stop with scale and T-slots
support arms
Operator instructions

OPTIONAL EQUIPMENT

- Pneumatic sheet hold-up device, SKU : 254188
- Motorized back gauge 29.5" (BRL 401.2 NC), SKU : 254189
- Motorized back gauge 29.4" (BRL 401.2 NC), SKU : 254190
- Additional blade kit for 78.7" cut length, SKU : 254193
- Angular stop adjusts from 0 to 180°, SKU : 254196
- Fuji control, SKU : 254204