



### SKU : 133621

The KMT M series features a solid construction and is of high quality. These modern plate shears are equipped with a powerful drive motor, and a straight cutter angle ensures minimum workpiece torsion during cutting. The high-precision back gauge is positioned manually.

- Solid steel weldment with sliding block guide
- Cutters for stainless steel cutting are included
- Reversible cutters with multiple cutting surfaces
- Manual back gauge with travel display
- Work area secured by light curtain

## TECHNICAL SPECS

### WORKING AREA

Working length	1560 mm
Cutting angle	2 deg
Work table height	810 mm
Work table depth	390 mm
Number of support arms	2 positions
Support arms	450 mm
Strokes per minute	35 H/min

### MEASURES AND WEIGHTS

Overall dimensions (length x width x height)	2.1 m x 2.1 m x 1.26 m
Weight	1500 kg

### BACK GAUGE

Rear stop	750 mm
-----------	--------

### CUTTING CAPACITIES

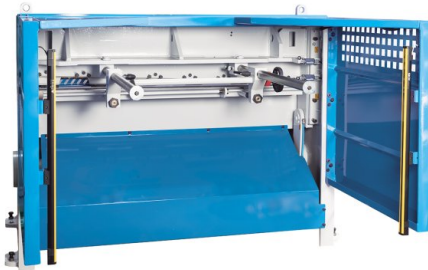
Plate thickness (min.) - 450 N/mm <sup>2</sup>	0.25 mm
Plate thickness (max.) - 450 N/mm <sup>2</sup>	3 mm
Plate thickness(max.) - 700 N/mm <sup>2</sup>	1.5 mm

### DRIVE CAPACITY

Motor rating main drive	3 kW
-------------------------	------



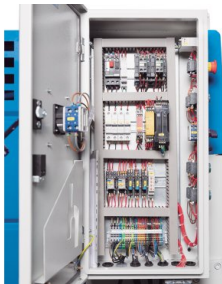
*Robust lateral stop with scale*



*Manual back gauge with long travel*



*Back gauge is protected via sturdy enclosure and light curtain*



*Clearly structured layout of components simplifies maintenance and troubleshooting*

## PRODUCT DETAILS

### Machine Body and Drive System

- The machine frame is made of a very rigid, solid steel weldment and the cutter bar is sliding-block guided
- The high-precision guide ensures clean cuts and special cutters for machining stainless steel plates are included
- The upper cutters are reversible for use of both sides, and the lower cutters feature 4 cutting edges
- A rigid, continuous hold-down fixes the sheet metal plate right in front of the cut line

### Material Support

- The rigid side angle stop simplifies alignment of the plate to the cut line
- Rugged support arms ensure a strong hold of large plates
- A wide support table simplifies workpiece handling

### Ergonomic Design

- The bright LED illumination of the cut line creates a clearly visible shadow on the marked line
- Additionally, the smart machine enclosure design allows vertical view from the top for exact workpiece alignment
- An integrated cut counter keeps the user up to date
- All lubrication points and adjustment screws are easily accessible to simplify regular maintenance

### Rear stop:

- The back gauge is positioned manually via a hand wheel
- An analog linear scale makes exact positioning easy and reduces down-times
- The easy accessible work area at the back gauge is secured by light curtain

### Equipment

- The mobile foot switch gives the operator added flexibility and both hands are free for handling the workpiece
- High-quality electric components ensure reliable operation and maximum availability
- The full machine enclosure provides maximum safety, features a practical design and is precision machined

## STANDARD EQUIPMENT

750 mm manual controlled backgauge  
 Cutting unit counter  
 Cutting line lightning & shadow illumination  
 Finger protection cages  
 Rear safety covers with photocell  
 Bottomblade with 2 cutting sides+upper blade with 4 cutting sides  
 Foot switch with emergency stop switch  
 Squaring arm with T slot, stoper and ruler  
 Front sheet holding arms (solid rectangular type)  
 Operator instructions

## OPTIONAL EQUIPMENT

- Backgauge NC control (750 mm BRL), SKU : 254189
- Backgauge NC control (1000 mm BRL), SKU : 254190
- 0-180°Angular Shearing Device, SKU : 254196
- Upgrade to Fuji controller, SKU : 254204



## KNUTH on YouTube

### Information to the point

On our YouTube channel you can find videos for nearly all machines from our program. We show the machines from current deliveries and you get an impression of the handling, the processing quality and the machining performance.

**Are you interested in a machine for which you cannot find a current video?  
Please feel free to contact us!**