



Guillotine Shears KMT S 2554 NC

SKU : 132211

- Solid steel weldment
- NC-controlled back gauge can be easily programmed
- Automatic, semi-automatic and manual mode
- Blades with multiple cutting surfaces
- Manual kerf adjustment



TECHNICAL SPECS

WORKING AREA

Working length	2550 mm
Cutting angle	1.3 deg
Work table height	810 mm
Work table depth	455 mm
Number of support arms	3 positions
Support arms	940 mm
Strokes per minute	29 H/min

BACK GAUGE

Rear stop	750 mm
-----------	--------

CUTTING CAPACITIES

Plate thickness (max.) - 450 N/mm ²	0.1 mm - 4 mm
Plate thickness(max.) - 700 N/mm ²	2 mm

DRIVE CAPACITY

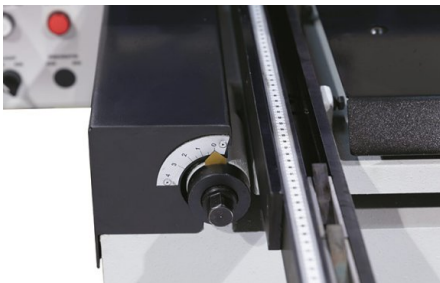
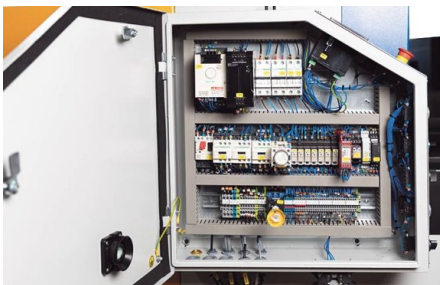
Motor rating main drive	7.5 kW
-------------------------	--------

MEASURES AND WEIGHTS

Overall dimensions (length x width x height)	3.2 m x 2.15 m x 1.45 m
Weight	3500 kg



Material support rollers are recessed in the table for easy workpiece handling



PRODUCT DETAILS

Machine Frame and Drive System

- The machine frame is made of a very rigid, solid steel weldment
- The upper knives are reversible for use of both sides, and the lower knives feature 4 cutting edges
- A rigid, continuous hold-down fixes the sheet metal plate right in front of the cut line
- The optimum kerf for machining can be adjusted manually

Material Support

- The rigid side angle stop simplifies alignment of the plate to the cut line
- Rugged support arms ensure a strong hold of large plates
- Material support rollers are recessed in the table for easy workpiece handling

Ergonomic Design

- The mobile foot switch gives the operator added flexibility and both hands are free for handling the workpiece
- For a better view of the cut line, the hand safety guard can be flipped up or down
- The bright LED illumination of the cut line creates a clearly visible shadow on the marked line

Rear stop:

- The motorized back gauge ensures precise positioning in automatic, semi-automatic and manual modes
- The NC-controlled back gauge can be easily and quickly programmed
- The easy accessible work area at the back gauge is secured by light curtain
- The machine can be equipped with an optional NC-controlled back gauge for a length up to 1000 mm, or a sheet hold-up device

STANDARD EQUIPMENT

BRL NC controller
 Motorized rear stop (750 mm)
 Manual blade gap adjustment
 Foot pedal with emergency stop switch
 Cut-line lighting
 Light curtain
 Squaring arm
 Support arms with T-slots and tilting stop
 Ball bearing front table
 Top blade with 2 sides
 Finger guard
 Operator instructions

OPTIONAL EQUIPMENT

- Motorized back gauge 1000 mm (BRL 401.2 NC), SKU : 256816
- Adjustable angle stop on the support arm (the left one) 0-180°, SKU : 253666
- Pneumatic sheet back support, SKU : 253667